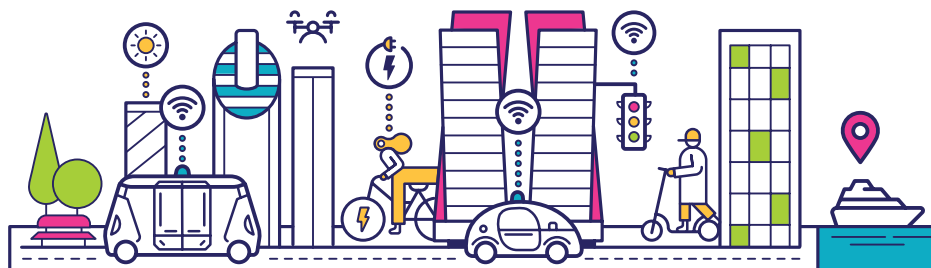




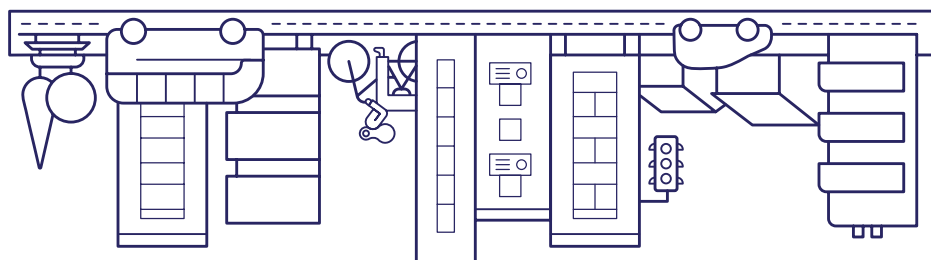
ECOMOTION

SMART TRANSPORTATION COMMUNITY



ECOMOTION BOOKLET 2019

— TOWARDS THE TIPPING POINT —



Fuel
Choices and
Smart Mobility
Initiative



Ministry of Economy and Industry



ISRAEL
INNOVATION
INSTITUTE

04

ECOMOTION

06

OPENING NOTES

12

STARTUPS INDEX

22

SECTOR
AUTONOMOUS
& CONNECTED

74

SECTOR
ELECTRIFICATION
& ENERGY

86

SECTOR
SHARED MOBILITY

94

SECTOR
MARITIME

98

SECTOR
DRONES & AVIATION

104

SECTOR
URBAN MOBILITY

127

EVENT
PARTNERS

128

PARTNERS
PLATINUM

134

PARTNERS
GOLD

142

PARTNERS
SILVER

152

PARTNERS
BRONZE

GLOBAL COMMUNITY FOR INNOVATIVE SMART TRANSPORTATION

EcoMotion is a dynamic community with over 600 start-ups (constantly growing) and 9,000 community members in the field of Smart Transportation. Understanding startups do not grow in a void, we bring together local & global entrepreneurs, academics, government officials, automotive industry representatives, investors and much more; providing a support platform for knowledge-sharing, networking and collaboration.

Our mission is to support the growth of the Israeli Smart Transportation sector and enhance the implementation of innovation in our field, while simultaneously, positioning Israel as a global innovation center for Smart Transportation.

EcoMotion has an extensive innovation toolkit to support public and private sector organizations in the implementation of innovation, such as: Challenge Competitions, Adaptathons, Networking Events and more!

- Innovation Exhibition
- Meet & Interact
- Israeli Innovation
- Over 600 Startups
- 9,000 Community Members
- Annual Main Event

ECOMOTION COMMUNITY SECTORS:



AUTONOMOUS
& CONNECTED



ELECTRIFICATION
& ENERGY



MARITIME



SHARED
MOBILITY



URBAN
MOBILITY



DRONES &
AVIATION



EcoMotion is a non-profit organization and a joint venture of the Israel Innovation Institute, Fuel Choices and Smart Mobility Initiative (Prime Minister's Office), Ministry of Economy and the Israeli Automotive and High-Tech industries.

JOIN US: [ECOMOTION.ORG.IL](https://ecomotion.org.il)

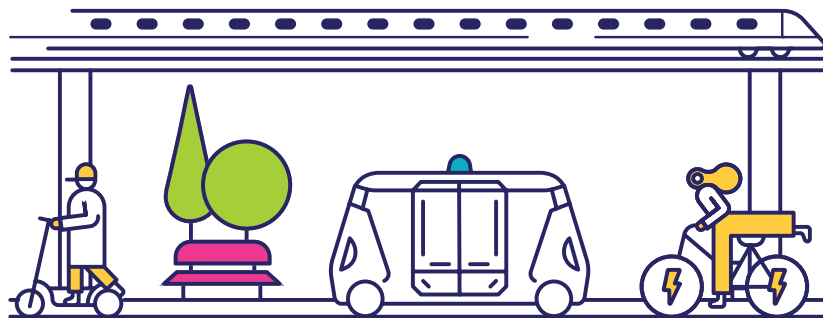
EcoMotion Global Community @EcoMotionIL

@ecomotion.community



We are not prophets, we don't know when autonomous vehicles will be fully deployed on the road, but we can guarantee you that every AV will have some kind of Israeli technology within.

- The EcoMotion Team -



Orlie Dahan
Executive Director, Ecomotion
Israel Innovation Institute

Seven is a powerful number.

It has many meanings and many different interpretations amongst numerology, religion, nature & mathematics.

In the past seven years, the EcoMotion Community has exceeded all expectations and progressed immensely; From eclectic investments, to securing over \$6B in startup funding, from tens of startups in the ecosystem to over 600 of them and from raw ideas to well established tech companies.

Our 7th EcoMotion Main Event shows that like in all interpretations - 7 is Prime & Positive.

This year's theme: 'Towards the Tipping Point', refers to the moment in mobility evolution when traditional transportation shifts to Smart Mobility. Though moving fast, we have a long way to go in order to bridge the gaps, and shift from innovative and groundbreaking technologies to life changing implementations. We need to remove barriers and define the roles & responsibilities of the different players.

May the energy of 7 bring us the wisdom to continue exploring, the courage to make mistakes and the flow needed to free the bottlenecks needed for bringing innovation down to the production lines and out to the streets.

I am honored and grateful to be a part of this unique and innovative community. I would like to thank our partners, industry players, investors, researchers, policymakers, and of course our innovative entrepreneurs; all of you are the core of the EcoMotion Community and together we will push mobility Towards the Tipping Point.




Meir Arnon

Chairman of the EcoMotion Week
Board Member of the Israel Innovation Institute

Shalom and Welcome you all,

The theme of the current event is “Towards the Tipping Point”. The tipping point in mobility will happen with the help and joint efforts of many participants at this event: visionary thinkers, technology entrepreneurs, innovation evangelists, corporations, and many more that understand that we should create a new way, safer and cleaner, to move. EcoMotion is the place to be, to learn, to meet and to create this reality.

EcoMotion is not a regular event. EcoMotion, like the other communities in the Israel Innovation Institute, is an innovation platform to foster collective creation and collaboration.

As a Board Member of the Israel Innovation Institute and the Chairman of the EcoMotion Week, thank you for your participation and contribution to EcoMotion and to this event.


Dr. Anat Bonshtien

Chairman and Director
Fuel Choices and Smart Mobility Initiative,
Prime Minister's Office

I am excited to welcome you all to our 7th annual EcoMotion event. With continuous growth, investments in Israeli smart mobility startups, and stronger multinational presence, this remarkable event is a reflection of the Israeli market's strength and uniqueness.

During 2019 some of our most promising projects will be completed and available to all, fueling the innovative Israeli spirit and R&D efforts. Amongst them: Israel's pioneering HD mapping project, the Israeli Research Center for Smart Mobility and the consortium for autonomous driving “AVATAR”.

We continue to work towards the success of the Israeli smart mobility ecosystem.

We are promoting enabling and supportive policies and regulation, with a comprehensive- hands-on and dynamic governmental approach.

On behalf of the Fuel Choices and Smart Mobility Initiative, I invite you to approach us for an open dialogue in order to harness our efforts to the market's needs and to help the government implement the vast potential within the smart mobility revolution.





Shay Rinsky
Managing Director
Ministry of Economy

It is a great pleasure to welcome all of you to EcoMotion 7th Annual Event.

Israel is well known as a hub for innovation and powerhouse for pioneering technologies. Israeli thinkers, makers and doers are changing the world of Media & Internet, health, security, and in the past decade –Automotive and Transportation as well.

While Israel doesn't have native auto manufacturing, it does excel in the automobile smart technology sector. With more than 1,400 new startups per year, 300+ multinational companies, thousands of entrepreneurs and a comprehensive business ecosystem, global auto manufacturers and tech giants are looking at Israel while creating the next generation of smart vehicle. Leading automotive brands are turning to Israel to develop cutting edge auto parts and technologies to deck out their latest products, and playing a key role in the Israeli ecosystem. We welcome all of them and proud to be part of the future mobility revolution!

The Ministry of Economy supports EcoMotion, the smart transportation community in Israel, as we believe the traditional model of innovation has been undergoing fundamental changes. With this perception, we established "innovation communities" in significant industrial sectors. The communities support the local ecosystem and its attempts to cope with global partners in order to assimilate innovation, which will change the life of all us. Together, we can shape a better future in mobility, health, education, and many more fields.

I wish all of you great success and a fruitful conference.



Ministry of Economy and Industry



Boaz Mamo
EcoMotion Founder
Israel Innovation Institute Board Member

Here's to the crazy ones.

The misfits.

The rebels.

The troublemakers.

The round pegs in the square holes.

The ones who see things differently.

They're not fond of rules.

And they have no respect for the status quo.

You can quote them, disagree with them, glorify or vilify them.

About the only thing you can't do is ignore them.

Because they change things.

They push the human race forward.

While some see them as the crazy ones, we see genius.

Because the people who are crazy enough to think they can change the world, are the ones who do.

– Steve Jobs

Here to the crazy ones.

That believed, Israel could be a center for innovation in mobility.

That change the auto industry, even when we don't have one.

That keep dreaming about the future of mobility for the last 7 years.



ISRAEL
INNOVATION
INSTITUTE

STARTUPS INDEX

12

- 0.10 OF A SECOND
- ABILISENSE
- ACIIST
- ACTASYS
- AD KNIGHT
- ADAM COGTECH
- ADASKY
- ADDIONICS
- AEROSHELA K.D.
- AFEKA ACADEMIC COLLEGE OF ENGINEERING
- AI INCUBE (PARKNAV)
- AI.DOCK
- AIGENT-TECH
- AIPARK
- AIROBOTICS
- AIRSCORT
- ALGOLION
- ALLEGRO.AI
- ANAGOG
- APOLLO POWER
- APOSTERA
- AQUARIUS ENGINES
- ARBE
- ARCUSTEAM
- ARGUS CYBER SECURITY
- ARIEL UNIVERSITY
- ARLOU AUTOMOTIVE CYBER SECURITY
- ARTSYS360
- ASN - INT
- ASRG

- ATLAS
- AURORA LABS
- AUTOFLEET
- AUTOLEADSTAR
- AUTOTALKS
- AUTOTRUST
- AVNITECHNOLOGIES FLUID IN MOTION
- AXILION SMART MOBILITY
- BAMBI DYNAMIC
- BIKE PLACE
- BINAH.AI
- BLITZ
- BREEZOMETER
- BRIGHTWAY VISION
- BRINGOZ
- BRODMANN17
- BUCKLEAPP
- C2A SECURITY
- CAARESYS
- CAR DEVICE
- CAR PLUS
- CARTICA AI
- CASESENSE TECHNOLOGIES
- CEPTION
- CERVELLO
- CHAKRATEC
- CIPHERSIP
- CITIRIDE
- CITY TRANSFORMER
- CLICK-INS

13

FIND ME IN THE EXHIBITION

 AUTONOMOUS & CONNECTED |
  MARITIME |
  ELECTRIFICATION & ENERGY

 SHARED MOBILITY |
  URBAN MOBILITY |
  DRONES & AVIATION



-  CLOUD-WISE
-  COGNATA
- COMROADS
- CONTINEWIT
-  CONTINUAL
-  CONTINUE BIOMETRICS
- COREPHOTONICS
- CREATIVE IC3D
-  CRISPIFY
-  CYBELLUM TECHNOLOGIES
-  CYBER 2.0
- CYDOME SECURITY
-  CYLUS
- CYMOTIVE TECHNOLOGIES
-  DAV.CITY
-  DEEYOOK
- DESIGN SHABTAI
-  DOCKTECH
- DRIDE
-  DRIIVZ
- DRIVEWAY SOFTWARE
-  DROMOS
- DSRAIDER
- EAZYTRAIN
- ECYCLI
-  ELECTREON
- ELECTRIQ~GLOBAL
-  ELLR
- EMOTO - AUTO ELECTRIC
-  ENGIE





-  ENIGMATOS
-  ENROUTE
- EVE
- EVOWAY
-  EVR MOTORS
- E-WAY
-  EYE-NET MOBILE
-  EYESIGHT TECHNOLOGIES
-  EYEWAY
-  FAST APPLICATIONS
- FIRECHECK
- FIRSTPOINT MOBILE GUARD
-  FLEETONOMY
- FLEXIFUEL
- FLYTREX AVIATION
-  FORESIGHT AUTOMOTIVE
-  FORETELLIX
- FORGE AHEAD
- FORMULA TECHNION -
ELECTRIC DRIVERLESS
- G. BERES
-  GALOOLI
- GEODRONES
- GETT
- GLR TECH
-  GOTO GLOBAL
- GREEN ELMF CABLES
-  GREENQ
-  GREENSPOT
- GRIIP
-  GUARDIAN OPTICAL
TECHNOLOGIES
-  GUARDKNOX

FIND ME IN THE EXHIBITION

 AUTONOMOUS & CONNECTED |  MARITIME |  ELECTRIFICATION & ENERGY

 SHARED MOBILITY |  URBAN MOBILITY |  DRONES & AVIATION

H2 ENERGY NOW
 HAILO
 HERE MOBILITY
 HEREO
 HI AUTO
 HIGH LANDER
 HOOPO
 HOPON MOBILITY
 I4DRIVE
 IHEAD
 IMAGRY
 IMVISION
 INFINIDOME
 INNOVIZ TECHNOLOGIES
 INPRIS

INSIGHT ACOUSTICS
 INTELLICON
 INTELLIGENT SMART IDEAS
 INTELLIGENT TRAFFIC CONTROL
 INTUITION ROBOTICS
 IONTERRA
 IPGALLERY
 IPHYSICIST
 IRP SYSTEMS
 ITURAN
 IVOBILITY
 JIFLEET
 JUNGO CONNECTIVITY
 JUSTRIDE
 KARAMBA SECURITY



 KENKO TECHNOLOGY
 KEYPODON
 KMOEYE
 L7 DEFENSE
 LAKURUMA
 LEO LANE
 LIVERIDE
 LIVESURANCE- RISKPRICE
 LIVEU
 LOGINNO
 M. ENERGY
 MAKE MY DAY
 MANTARRAY
 MAPPO
 MARADIN



 MASTERKEY DIGITAL
 MATHEMATIC.AI
 MDGO
 METROBOARD
 MOBICAR APP
 MOBILEYE AN INTEL COMPANY
 MOODIFY
 MOOVIT
 MYCELIUM
 NANOLOCK SECURITY
 NANOSCENT
 NEO BY E100
 NEO COMPOSITE
 NETEERA
 NEURA

FIND ME IN THE EXHIBITION

 AUTONOMOUS & CONNECTED |  MARITIME |  ELECTRIFICATION & ENERGY

 SHARED MOBILITY |  URBAN MOBILITY |  DRONES & AVIATION

 NEWSIGHT IMAGING
 NEXAR
 NFT
 NOTRAFFIC
 OPSYS TECH
 OPTIBUS
 OPTIMA DESIGN
AUTOMATION
 OPTIVECTOR
 OPTIWAYS.IO
 ORCA AI
 ORYX VISION
 OTAIOT
 OTONOMO
 OTORIZE
 OTTOPIA

 OVO AUTOMOTIVE
 PARKAM
 PAXXI ROAD
 PERSONALICS
 PHANTOM AUTO
 PICK A PIER
 PIXTIER
 PLACID
 PLASAN
 POINTER TELOCATION
 POLYMERTAL
 POWERMAT
 POWHERE
 PZARTECH
 QUAY

 RADGREEN
 RADIOMIZE
 RADSEE TECHNOLOGIES
 RAIL VISION
 RAVIN AI
 REGULUS CYBER
 RFISEE
 RIDE VISION
 RIDEAIR INNOVATION
 ROAD CODE ENGINEERING
 ROADIO
 ROADS.AI (PREVIOUSLY
1.21GW)
 ROADSENSE
 ROBOTAI
 ROUTEVALET

 RUNEL NGMT
 S.R.I THE SPIRAL RING
INTERCHANGE
 SAFEMODE
 SAFER PLACE
 SAFERIDE TECHNOLOGIES
 SAVE A TRAIN
 SAVERONE
 SCOOT AIR
 SEEBO
 SHAREROUTE
 SIGHTEC
 SILENTIUM
 SIXDOF SPACE
 SKYTRAN
 SLYDE

FIND ME IN THE EXHIBITION

 AUTONOMOUS & CONNECTED |
  MARITIME |
  ELECTRIFICATION & ENERGY

 SHARED MOBILITY |
  URBAN MOBILITY |
  DRONES & AVIATION

SMART CAR
 SMART WAYS
 SOFTRIDE TECHNOLOGIES
 SOFTWHEEL
 SONICLUE
 SPARK PARKING TECHNOLOGIES
 SPARTANS AI
 SPATIAL LOGIC
 SPEAREYE
 SQREAM
 STEP-HEAR
 STOREDOT
 STREETWIZE SIMULATIONS
 TACTILE MOBILITY
 TANKU

TEPORTO
 TEVVA ELECTRIC TRUCKS
 THE SMARTIRE
 THEWHOLLYSEE
 TLT BOARD
 TRAFFILOG
 TRAILZE
 TRANSPORT.NET
 TRAXI
 TRIEYE
 TRUCKNET
 TUGGER
 TUKUORO VOICE OPEN PLATFORM
 ULTRA-CHARGE
 UPSTREAM SECURITY

UVEYE
 VALENS
 VALERANN
 VAYAVISION
 VAYYAR
 VECTORAI
 VHOLA
 VIA
 VIISIGHTS
 VIZIBLEZONE
 VOYAGE81
 WAYCARE
 WAZE
 WEBUS
 WEDRIVE TECHNOLOGY

WHITE RAVEN
 WHIZZ
 YAMAR ELECTRONICS
 ZEHPOH
 ZENCITY

FIND ME IN THE EXHIBITION

AUTONOMOUS & CONNECTED | MARITIME | ELECTRIFICATION & ENERGY

SHARED MOBILITY | URBAN MOBILITY | DRONES & AVIATION



AUTONOMOUS & CONNECTED

0.10 OF A SECOND

0.10 of a Second is an Israeli R&D company established to increase road safety. The system we developed tracks vehicles behavior, generates intelligent indications and improves response time by reducing the friction coefficient for all road users. In recent years, we have filed a patent application, developed a demo prototype, developed a basic alpha version and are about to go to a pilot with the Israeli police department.

SEED | GENERAL
0.10ofasecond@gmail.com



ABILISENSE

AbiliSense – Smart Listening Abilities. Abilisense has developed a new breed of AI sound recognition software, that analyzes audio generated by voice-enabled devices in order to identify, predict and alert both day-to-day occurrences as well as life-threatening situations. Business model: API Subscription or SDK Licenses. Looking for: technology and channel partners – strategic investors – customers – unique POC's – pilots – dataset partners.

SEED | IN CABIN
www.abilisense.com | info@abilisense.com



ACTASYS

Vehicles are increasingly reliant on sensors as the industry implements advanced driving technologies. As sensors get exposed to rain, dirt, snow, the sensors can go 'blind', threatening the safe operation of the vehicle and industry momentum. Actasys is a leader in 'aero-optics' and its patented Actalet technology locally generates strong jets of air, maintaining the cleanliness of automotive sensors, achieving safety, and enabling optimal operation of ADAS and autonomous vehicles.

ROUND A | ADAS
www.actasysinc.com | info@actasysinc.com



AD KNIGHT

Enhancing ADAS detection of pedestrians and vulnerable road users based on a sensor which detects their personal devices (cellular, Bluetooth and Wi-Fi). The sensor measures the relative position between the vehicle and the personal devices using a deterministic approach, a low computational power, and with a 360° coverage. AD Knight solution allows saving lives by semantic enrichment for ADAS data and ADAS enhancement in obscured and low visibility scenarios.

PRE-SEED | ADAS

www.ad-knight.com | info@ad-knight.com



ADAM COGTECH

ADAM aims to solve the cause of 90% of car accidents, which is human error or the lack of human cognitive ability to execute the mission of driving safely, WITH a revolutionary modular software Platform that demonstrates significant enhancement in driver's performance, also enabling human machine cooperation necessary for the safe introduction of partial and highly automated driving vehicles.

SEED | IN CABIN

www.adam-cogtec.com | carl@adam-cogtec.com



ADASKY

AdaSky leads the FIR revolution by bringing a high-resolution thermal sensor to the automotive market, enabling autonomous vehicles to see better and understand more. AdaSky's Viper is a breakthrough, complete-sensing solution to enable 24/7 driving, combining a far infrared thermal camera with advanced machine vision algorithms that lets autonomous vehicles see and understand the road in any lighting or weather condition.

ROUND B | ADAS

www.adasky.com | contact@adasky.com



AFEKA ACADEMIC COLLEGE OF ENGINEERING

Autonomous motorized scooter platform - Academic research activity to develop an autonomous platform based on 3-wheel motor scooter. Perfect for urban logistics: high payload, agile, lower energy consumption, much improved service for the logistics operator compared with 4-wheel NEV.

PRE-SEED | GENERAL

english.afeka.ac.il | danh@afeka.ac.il



ALLEGRO.AI

Advanced deep learning perception solutions are enabling autonomous vehicles, in-cabin monitoring solutions, manufacturing quality control and other uses. The challenges of this new paradigm are huge, spanning Data Science, Software Engineering, DevOps, QA and production management. Allegro.ai engineers the science of deep learning by providing automation, collaboration and scale. Our end-to-end solution suite addresses a company's full set of research and development needs.

ROUND A | ADAS

allegro.ai | contact@allegro.ai



ANAGOG

Anagog is the pioneer of on-device artificial intelligence solutions that turn mobile phones into smart digital extensions of their owners. Anagog's JedAI technology learns the user's unique profile on the smartphone itself and enables prediction of future activities and visits to places. JedAI's advanced edge-AI capabilities does not require any personal data to leave the phone, hence fiercely protecting user's privacy.

ROUND B | CONNECTIVITY

www.anagog.com | sales@anagog.com



APOSTERA (Germany)

Apostera is the software product company with the vision of bringing mobility world to a new area of unavoidable tomorrow – area of autonomy. We are bringing Mixed Reality capabilities to vehicle enhancing Navigation experience reshaping how passengers interact with the environment around car location. Our solution merges the virtual and real worlds helping drivers understand in an exact way where to make a maneuver, therefore making the driving experience more enjoyable, safe and carefree.

ROUND A | IN CABIN

apostera.com | andrey.golubinskiy@apostera.com

APOSTERA

ARBE

Arbe is the world's first company to demonstrate ultra-high-resolution 4D imaging radar with post-processing and SLAM. It is disrupting sensor development by bridging the gap between radar and optics with its proprietary imaging solution that provides optic sensor resolution with the reliability of radar tech for all levels of vehicle autonomy. They were founded in 2015 and the company is headquartered in Tel Aviv, with customer service locations in China and the US.

ROUND B | ADAS

www.arberobotics.com | shlomit.h@arberobotics.com

arbe

ARCUSTEAM

ArcusTeam developed an automated platform to detect vulnerabilities and exploitation paths on any connected device, including its 3rd parties' components, by analyzing the firmware file only. no need for source code. We increase the security level of our customer's products during the entire life-cycle of each device – from the design stages to the development stages, and during the security updates of any GA connected device.

SEED | CYBERSECURITY

www.arcusteam.com | carmit@arcusteam.com

ArcusTeam 

ARGUS CYBER SECURITY

Argus, a global leader in automotive cyber security, provides OEMs, Tier 1s and fleet operators, scalable, end-to-end solutions and services that protect private and commercial vehicles against cyber-attacks. In addition, Argus provides a software updates over-the-air (OTA) solution to enable OEMs to deploy software and security updates throughout the vehicle lifespan. Argus is an independent company of Elektrobit and engages in commercial relations with all automotive suppliers globally.

ESTABLISHED | CYBERSECURITY

www.argus-sec.com | nicole.morero@argus-sec.com

ARGUS
CYBER SECURITY

ARIEL UNIVERSITY

The human driver would continue to play a central role during the transition to full autonomy. Based on this understanding, we have designed a platform (Vehicle + Sensors) to support the design of semi-autonomous vehicle-human driver interaction, to enhance autonomous control and decision making, and to explore the human aspects of trust in of autonomous vehicles. We encourage industry agents, startups, and governmental agencies to use the M-Lab for their R&D and testing initiatives.

ESTABLISHED | IN CABIN

www.ariel.ac.il | musicant.oren@gmail.com

ARIEL
UNIVERSITY 

ARILOU AUTOMOTIVE CYBER SECURITY

Arilou provide the most innovative & comprehensive technology that will protect your customers from the next cyber-attack and will prevent monetary and reputation damage to your brand. While vehicle connectivity is becoming common, our mission is to provide the automotive industry with cutting edge cyber security products for the connected car. Since our establishment in 2012, we've been researching and developing cyber security solutions dedicated to the automotive environment.

ESTABLISHED | CYBERSECURITY

ariloutech.com | niva.grunzwieg@nng.com

ARILOU
Automotive Cyber Security
Part of NNG Group 

ASRG

The Automotive Security Research Group (ASRG) is a non-profit initiative to promote research and development of security solutions for automotive products.

PRE-SEED | CYBERSECURITY
www.asrg.io | rotem.bar@asrg.io



AURORA LABS

Aurora Labs' Line-Of-Code Maintenance technology is the foundation of its In-Vehicle Software Management solution. Using machine learning algorithms to uniquely address all four stages - detect, fix, update and validate - of a software health solution, Aurora Labs future-proofs the next generation of software-driven automotive features.

ROUND A | CONNECTIVITY
auroralabs.com | rogero@auroralabs.com



AUTOLEADSTAR

AutoLeadStar is a data-centric AI-empowered marketing platform for the US automotive market that transforms dealers into actors in the connected commerce/car economy. AutoLeadStar serves over 350 dealerships (including dealers from 20% of the top-150 groups in the United States) and is rapidly growing to be the connection point for millions of customers, dealers, and cars.

ROUND A | CONNECTIVITY
autoleadstar.com | partner@autoleadstar.com



AUTOTALKS

Autotalks, a V2X chipset market pioneer and leader, provides customers worldwide with state-of-the-art V2X solutions supporting both DSRC and C-V2X. Autotalks helps reduce collisions and improve mobility as it complements information coming from other sensors, specifically in non-line-of-sight scenarios. The chipsets offer the most advanced, truly secure and highest performing global V2X solution designed for autonomous vehicles. Autotalks' solution will be mass deployed in the coming years.

ESTABLISHED | CONNECTIVITY
www.auto-talks.com | info@auto-talks.com



AUTOTRUST

AutoTrust guides drivers when and how they can let their car take control of driving and when they should take control back. Our solution increases awareness, acceptance and usage of self-driving ADAS features, by that allowing a safer drive while building both driver and vehicle-brand trust toward autonomous vehicles. AutoTrust leverages internal vehicle data, external data and the driver's community to provide the safest personalized guidance to the driver.

PRE-SEED | IN CABIN
www.autotrust.tech | info@autotrust.tech



AVNITECHNOLOGIES FLUID IN MOTION

HK-CVT hydro-mechanical drivetrain design to improved vehicle dynamic maneuverability, fuel consumption, safety, and reliability. HK-CVT has superior power density compared to electric system. HK-CVT drivetrain have extra benefit in implement in autonomous vehicle no need for extra auxiliary devices to activate vehicle. In UAV sector, HK-CVT powertrain has significantly advantages reduce fuel consumption, increased weight to power ratio and UAV maneuverability.

SEED | GENERAL
avniben@outlook.co.il



BAMBI DYNAMIC

Our On-Demand and UBI Insurance platform provides insurance companies dynamic car insurance products characterized by the usage, the type of driving, the relevant insurance coverage and the personalization per drivers and their cars. Micro structuring and data usage through connecting devices and apps enable high flexibility and wide range of dynamic insurance products from a “pay as/how you go/drive” car insurance to car services such as ride hailing, car-sharing, electric scooters and more.

SEED | CONNECTIVITY

www.bambidynamic.com | moshe@bambidynamic.com



BINAH.AI

Invest a little and gain a lot with out-of-the-box data science, business-focused use cases, combining Signal Processing and AI to deliver previously impossible levels of Accuracy, Stability, and Performance.

ROUND A | GENERAL

www.binah.ai | dmaman@binah.ai



BRIGHTWAY VISION

It is our vision to make driving safer by providing a multi-functional vision & ranging system for the automotive industry. Utilizing our technology, we provide all the benefits of a rich, natural & intuitive image and range information for enhanced vision today and for automated driving tomorrow.

ROUND B | ADAS

www.brightwayvision.com | aviran.elfassy@bw-vision.com



BRODMANN17

Brodmann17 is a provider of vision-first technology for ADAS and automated driving. Bringing the benefits of AI found in premium vehicles to the mass market Brodmann17's lean, patent-pending software architecture delivers state-of-the-art accuracy while consuming only a fraction of computing power, opening up the world to the benefits of deep learning vision. The solution is built from the ground up and designed against the industry's toughest standards for the world's largest OEMs and Tier 1s.

ROUND A | ADAS

www.brodmann17.com | keren@brodmann17.com



C2A SECURITY

C2A provides protection from life-threatening cyber-attacks for the automotive industry. Using a bespoke suite of cyber security solutions, C2A provides in-vehicle end-to-end cyber protection. C2A products are based on a deep knowledge of the automotive industry's pains and requirements and have been engineered from the ground-up with automotive manufacturers' needs in mind: cost, time-to-market and integration complexity.

ROUND A | CYBERSECURITY

www.c2a-sec.com | info@c2a-sec.com



CAARESYS

Caaresys connects passengers to the future cockpit. Caaresys contactless sensor based on RF radar (not camera) monitors: • Vehicle occupancy: Child presence detection, each seat occupancy state. • Passenger biometrics: Respiration Rate (RR), Heart Rate (HR) and Heart Rate Variability (HRV). The sensor may be integrated in various locations in the car. The solution minimizes the effects of human factors and saves thousands of lives! Caaresys system operates in static and driving modes.

SEED | IN CABIN

www.caaresys.com | konstantin@caaresys.com



CAR DEVICE

Car device for: 1. parallel parking (without using a steering wheel) 2. flat tire replacement (without using a jack) 3. easy parallel parking and flat tire replacement for Disabled driver 4. device for transporting goods in narrow and inconvenient places.

PRE-SEED | GENERAL

<https://youtu.be/mR60BQHUI4> | kim72816@gmail.com

CAR PLUS

The world's 1st hybrid On-Demand road assistance service which includes volunteers & professionals on the same platform.

PRE-SEED | GENERAL

carplus.app@gmail.com



CARTICA AI

Cartica provides revolutionary solutions for the next generation of vehicles and mobility. As a part of the Cortica group, Cartica's automotive visual intelligence platform is built on the foundation of a mature self-learning technology backed by over 200 patents. Utilizing this Autonomous AI, Cartica's visual intelligence platform garners a comprehensive and detailed understanding of the vehicle's environment allowing for scene understanding, perception layers, and predictive capabilities.

ROUND C | ADAS

cartica.ai | contact@cartica.ai



CEPTION

At Ception we are developing the future of localization by defining a new geospatial language. A language that represents elements with high accuracy, cross-modalities and cross-viewing angles, dedicated for positioning. An innovative approach based on data analytics from a variety of resources together with real-time processing of vehicle sensors data enables Ception to achieve a new level of accuracy, reliability and scalability.

SEED | ADAS

ception.ai | info@ception.ai



CIPHERSIP

The Watermarking Communications Company! We're the only company, engaged in the market, that creates Invisible communication path over existing Protocols, increase the bandwidth up to x3 Times more Data per Message (CANbus, CAN-FD, LIN, Modbus, etc.) without changing the original Protocols and Standard! We provide new opportunities for the entire automotive ecosystem for delivering more data per message, increased security, faster and reliable OTA, privacy, data monetization and more.

ROUND A | GENERAL

www.ciphersip.com | eldad@ciphersip.com



CLOUD-WISE

Cloud-Wise unique R&D specializes in location, navigation, tracking and driver safety even UNDERGROUND! Our patented, "outside-the-box" solutions utilize standard, low-cost components combined with proprietary algorithms and calculations. This new, cutting-edge approach gives us accurate location WITHOUT GPS and extremely low power consumption. It not only eliminates mobile device power drain but will also become an integral piece of the autonomous market as it develops. Want more info?

ROUND A | ADAS

www.cloud-wise.com | elona@cloud-wise.com



COGNATA

Cognata is a leading global autonomous vehicle simulation provider, working with some of the largest autonomous vehicle manufacturers and partners in the world. Cognata's SimCloud, delivers a full product lifecycle simulation solution for ADAS and AV developers that is built on a single cloud-based platform. SimCloud supports customers from early development stages through deployment, accelerating time-to-market readiness.

ROUND B | ADAS

www.cognata.com | sales@cognata.com



COMROADS

Comroads unites millions of dash cam users into an anonymous social sharing community, making footage from millions of untapped dash cam accessible to those who need them. In a future geared at arming cars with cameras, Comroads will be able provide the driver with easy access to not only to footage from their own car, but also those of users around them, regardless of what hardware they are using.

SEEDS | CONNECTIVITY

comroads.com | roy@comroads.com



Comroads

CONTINEWIT

ContiNewIt by IPgallery enables - Cities, Vehicle OEM, Communication Service Providers and Multimodal mobility providers - to address the challenges of the New Era of Mobility and capitalize on the opportunity. Our mobility services and apps utilize IoT, mobility/location and Edge technologies, real-time AI and big data AI, and leverage the intelligent connectivity of connected vehicles to encourage accessible, affordable, effective and safe urban mobility to all (people and goods).

ROUND B | GENERAL

www.ipgallery.com | info@ipgallery.com



CONTINUAL

Continual's advanced Mobility Experience Analytics monitors and benchmarks experiences of connected vehicles, IoT, driving- and passenger-subscribers. It uniquely grades precise travel routes - from discrete road segments to nationwide highway networks - and delivers up-to-date experience heatmaps. Continual enables connected/autonomous cars and drivers to take smarter route decisions for a safer and flawless journey experience.

ROUND B | CONNECTIVITY

www.continualexperience.com | info@continualexperience.com



CONTINUE BIOMETRICS

We partner with leaders in healthcare & automotive to bring to the market a revolutionary solution enabling users to detect a deterioration in their physiological status early on. Our sensing platform requires no physical contact with the user and can measure a variety of parameters remotely from vital signs to auscultation of cardiac/lung sounds. We apply advanced AI techniques to analyze the collected data, providing preventive care solutions suited to a variety of environments & users.

ROUND B | IN CABIN

www.cu-bx.com | lydia.katz@cu-bx.com



COREPHOTONICS

Corephotonics is the pioneer and worldwide market leader of multi-aperture camera technologies, specializing in optics, micro-mechanics and imaging/vision algorithms. The company's core technologies are shipping in more than 300 million devices worldwide. We believe camera-based sensing technologies still have a long way to go in the automotive space; thus, we are quietly developing a groundbreaking ADAS and AV camera solution enabling new applications and complete design flexibility.

ESTABLISHED | ADAS

www.corephotonics.com | ebriman@corephotonics.com



CREATIVE IC3D

Creative IC3D is an innovative start-up company in the field of Additive Manufacturing for the Printed Electronics industry. Creative IC3D develops a unique digital multi-technological process that offers a flexible and customized production for the creation of Copper based single layer traces (bulk properties). The fully functional high conductivity solution can be implemented within diversity of products such as IOT, sensors, RFID, antennas, etc.

SEED | PRODUCTION 4.0
www.cic3d.com | info@cic3d.com



CRISPIFY

Crispify designs the future in-cabin user experience through its all-in-one air quality management system. In-cabin and on-road air is a major health risk according to the WHO and has a significant impact on current automotive customer user experience and health. Combining high-end sensors, AI powered software and advanced filtration solution Crispify delivers clean air and an exceptional user experience to car companies, ridesharing and autonomous vehicles.

SEED | IN CABIN
www.crispify.io | info@crispify.io



CYBELLUM TECHNOLOGIES

Cybellum Technologies LTD, an automotive cybersecurity company, helps car manufacturers and other automotive stakeholders to manage the security of all the automotive components received via the supply chain, and monitor their risk throughout their entire lifecycle. Giving a full visibility into the supply chain, detection of vulnerabilities, control over risk, and continues monitoring which enables meeting compliance and enforcing organizational security policies.

ROUND A | CYBERSECURITY
cybellum.com | slava@cybellum.com



CYBER 2.0

CYBER 2.0 – TOTAL DEFENSE AGAINST THE SPREAD OF CYBER ATTACKS
Cyber 2.0 (founded in 2015) has developed a disruptive cyber-security technology. It is the only system in the world that provides total defense against the spread of cyber-attacks within organizational networks (viruses, ransomware, Trojan, information leakage, browser hijacking, and every new attack).

ROUND B | CYBERSECURITY
www.cyber20.com | sneerr@cyber20.com



CYMOTIVE TECHNOLOGIES

CYMOTIVE brings to OEMs and Tier1's, a holistic offensive-defensive PURPLE approach which has proven itself as the most effective in coping with the evolving Automotive Cyber Security threats. The company offers a full array of services in the risk management domains as well as advanced cyber security solutions for connected cars. CYMOTIVE's track record includes hundreds of hands on security engineering projects with OEMs and a product that is already deployed to the market in mass scale.

ESTABLISHED | CYBERSECURITY
www.cymotive.com | marketing@cymotive.com



DEEYOK

Deeyook has developed a wireless based 10cm accurate indoor and outdoor positioning solution. The solution is enabled by a new absolute measurement location sensor in firmware, which is based on patented direction ascertainment technology. The sensor is at the core of a cloud based, Machine Learning positioning solution that passively utilizes the direction data from over a billion existing APs and base stations and operates everywhere worldwide infrastructure free.

SEED | ADAS
www.deeyook.com | info@deeyook.com



DRIDE

Dride is building software & hardware in order to collect actionable data for the emerging autonomous vehicle market by leveraging dashcams and their driver.

PRE-SEED | GENERAL
dride.io | hello@dride.io



DRIVEWAY SOFTWARE

We made app that helps ordinary drivers become safe drivers, and helps insurers find and reward them.

ROUND A | CONNECTIVITY
www.driveway.ai | igor@driveway.ai



ELLR

Ellr connects motorcycles to riders to enhance safety and security in emergency situations.

ROUND A | CONNECTIVITY
www.ellr.bike | raz@ellr.bike



ENGIE

Engie's diagnostics technology provides a seamless solution for repairs & maintenance. Engie's solution connects to every car and collects data in real time. The data is used to diagnose the car status and provide the driver insights and predictive maintenance. The data is also shared with service providers such as mechanics, insurers and fleet managers to provide a better maintenance solution.

ROUND B | CONNECTIVITY
www.engieapp.com | gal@engieapp.com



ENIGMATOS

Enigmatos is the first to extract a vehicle's unique digital profile and provide detection and prevention of any malicious in-vehicle cyber activity. Our approach, Deep Car Identity Profiling (DCIP), is that each vehicle, each ECU and each message on the vehicle's communication network has a unique signature. Our technology detects the origin of cyber-attacks, offers valuable insights on vehicle safety and misuse, and can be smoothly integrated with existing & future vehicle architectures.

ROUND A | CYBERSECURITY
www.enigmatos.com | orit@enigmatos.com



ENROUTE

Enroute develops a personalized, location-based commerce platform linked to mobility apps like Uber, Lyft, etc. and mass transit services, allowing passengers to ride for FREE as they shop, interact and collect items from locations next to their destination.

SEED | IN CABIN
www.enroute.tech | aviv@enroute.tech



EVE

At EVE, we originate, we don't imitate. EVE is an AI technology creation and Patent holding company. We offer the licensing and implementation assistance of the Patents the company owns and manages. The Patents are in the Automotive cabin safety, Intelligent Transportation with Traffic circle management and AI managed First response to Incidents, Events and Accidents. The Automotive cabin safety patent already has a working prototype ready for production and marketing.

SEED | IN CABIN
www.eve-v.com | info@eve-v.com



EYE-NET MOBILE

Eye-Net Mobile is a technology product company, engaged in design and development of V2X (vehicle-to-everything) cellular-based accident prevention solutions. The Eye-Net's solution is designed to provide real-time pre-collision alerts to vehicles and vulnerable road users (pedestrians, cyclists, scooter drivers) by using smartphones and relying on existing cellular networks.

ROUND A | CONNECTIVITY

www.eyenet-mobile.com | info@eyenet-mobile.com



EYESIGHT TECHNOLOGIES

Eyesight develops sensing solutions for the in-car environment: DriverSense - driver monitoring, and CabinSense - occupancy monitoring. In addition, we offer an aftermarket DMS solution for fleets. Our technology utilizes computer vision & AI to enhance the driving experience, allowing our customers to optimize safety systems to the driver and passengers present, and to personalize the in-cabin environment according to identification and demographics.

ROUND C | IN CABIN

www.eyesight-tech.com | juli.kristof@eyesight-tech.com



FIRECHECK

FireCheck enable automotive repair shops to use their professional diagnostic scanners for diagnosing a geographically distant car, as if it were in the shop's premises. FireCheck provides repair shops with a revolutionary tool to efficiently perform daily routine jobs, and to increase customer's satisfaction and retention by saving car owners the need to make a physical visit to the repair shop, for a professional check of their car.

SEED | CONNECTIVITY

kobi.baron@yahoo.com



FIRSTPOINT MOBILE GUARD

FirstPoint Cybersecurity-as-a-Service seals any IoT device from new and evolving cyberattacks that exploit cellular network vulnerabilities; e.g., fake cell towers (IMSI catchers) and SS7/diameter loopholes. Our proven solution's total, continuous, network-level security prevents denial of service, location tracking and hacking. Easily deployed, easily managed and seamless to the device, FirstPoint requires no special hardware/software, updates regularly and has zero battery/CPU impact.

SEED | CYBERSECURITY

www.firstpoint-mg.com | noa@firstpoint-mg.com



FORESIGHT AUTOMOTIVE

Founded in 2015, Foresight Automotive designs, develops and commercializes stereo/quad-camera vision systems for the automotive industry based on 3D video analysis, advanced algorithms for image processing and sensor fusion. Foresight's flagship product QuadSight is a multi-spectral stereoscopic vision system that offers unparalleled obstacle detection capabilities under all weather and lighting conditions, for semi-autonomous and autonomous vehicles.

ROUND B | ADAS

www.foresightauto.com | info@foresightauto.com



FORETELLIX

Foretellix tackles the most challenging barrier to autonomous vehicle deployment-safety. Foretellix develops intelligent automation and analytic tools to orchestrate and monitor 100's of millions of driving scenarios including corner cases, providing the confidence required to allow broad deployment of autonomous vehicles. Foretellix's solution is required by leading autonomous vehicle developers, consumers, suppliers, insurance companies and regulators.

ROUND A | ADAS

www.foretellix.com | roy.fridman@foretellix.com



FORGE AHEAD

In hard working commercial and military vehicles, stressful conditions cause crippling damage to the power transmission. Forge Ahead's light weight device resolves this issue and protects all drivetrain parts from failure/breakage - it provides full durability and endurance in all terrains.

SEED | GENERAL

www.forge-ahead.com | amir@forge-ahead.com



FORMULA TECHNION – ELECTRIC DRIVERLESS

Formula Technion is an engineering project that brings together 70 students each year from mechanical, aerospace, electrical and industrial engineering as well as computer science to design, build and race a formula-style race car. The team develops for the 1st time in the Technion and Israel an electric & autonomous vehicle, in parallel with our annual combustion vehicle.

PRE-SEED | GENERAL

formula-technion.weebly.com | lielelg12@gmail.com



GALOOOI

Galooli stands out as a global partner in Remote Management & Energy Efficiency solutions with a distinct focus on maximizing fleet and electric power performance. Built on more than a decade of experience and expertise, our cutting-edge SaaS solutions offer machine learning-based platforms that translate multivariate data points into bottom-line results in battery life extension, preventive maintenance, and overall cost-cutting targets.

ESTABLISHED | CONNECTIVITY

galoolioto.com | idan@galooli.com



GRIIP

Data-driven Motorsport solutions. We use Data to enable Motorsport Users - Fans, Drivers, Gamers, Racing Series, Media Broadcasters - to interact and create value together.

ESTABLISHED | CONNECTIVITY

www.griip.com | info@griip.com



GUARDIAN OPTICAL TECHNOLOGIES

Guardian Optical Technologies has developed breakthrough, patented sensor technology for occupancy detection in vehicles, encompassing 2D, 3D and motion analysis in a single sensor designed to enable automobile manufacturers to produce safer, more convenient passenger-aware vehicles at a lower cost. Guardian enables occupancy detection for the entire cabin (all 5 seats). Guardian's sensor is mounted in the ceiling of the car.

ROUND B | IN CABIN

www.guardian-optech.com | lior@guardian-optech.com



GUARDKNOX

GuardKnox is a leading automotive cybersecurity company with comprehensive hardware and software solutions. The SNO platform protects all communications, is completely autonomous and defends against known and unknown attacks. GuardKnox patented technology separates and parses all network communications to allow only approved communications as detailed by OEM specification. The patented Service-Oriented architecture allows service level partitioning and enables customization of the vehicle.

ROUND B | CYBERSECURITY

www.guardknox.com | Courtney.mann@guradknox.com



HAILO

Hailo develops a breakthrough microprocessor based on a disruptive proprietary technology for deep learning applications, that delivers data center performance to edge devices. Hailo's processor is designed to fit into embedded devices enabling them to process high-resolution video and other high-throughput streams in real-time using state-of-the-art deep learning algorithms while operating at reduced power consumption, size and cost.

ROUND A | ADAS

www.hailotech.com | rachel@hailotech.com



HI AUTO

Next generation voice recognition system for the car.

SEED | IN CABIN

roy@hi.auto



I4DRIVE

i4drive patented AI multi-layered technology comprises advanced fusion of critical sensor and network data and transforms autonomous driving to connected autonomous mobility. i4drive provides smart mobility insights that dramatically change the way humans drive and the way machines are trained to drive. Our powerful data platform helps drivers, manufacturers, managers and operators reduce road accidents, monitor driver behavior and control road conditions.

ROUND A | ADAS

www.i4drive.com | adi@i4drive.com



IHEAD

Development of precipitation sensors for automatic control of vehicle wipers' operation. More particularly, a rain sensor that is attached to a windshield glass of a vehicle to detect raindrops, snow and frost on the surface of the glass and output signals to control a wiper and an air conditioning system of the vehicle depending on types and amounts of substances detected and a drop cycle of raindrops.

PRE-SEED | ADAS

sites.google.com/site/optoelectronicsolutions/profile

ihead@zahav.net.il



IMAGRY

Imagry is pioneering a real-time mapless autonomous driving solution. By pushing the limits of artificial intelligence and computer vision, Imagry's mapless autonomous driving platform uses a highly intelligent, vision-based approach that does not require an HD map, allowing the market for autonomous vehicles to scale and commercialize more rapidly. Imagry's fleet has already self-driven more than 3,000 miles in a dense urban area in Tempe, Arizona.

ROUND A | ADAS

www.imagry.co | nitsa@imagry.co



IMVISION

Connected car services strongly rely on a wide range of APIs to share sensitive data between car OEM backend servers and 3rd party service providers, whether directly or through a marketplace. imVision's patented technology uses AI-powered learning of the "API Language" to build granular behavioral models of data content, context and business logic and enforce them in real time, providing a unique advantage in mitigating attacks on APIs.

ROUND A | CONNECTIVITY

www.imvisiontech.com | aviv@imvisiontech.com



INFINIDOME

infiniDome provides front-end cyber solutions protecting wireless communications from jamming and spoofing attacks. The company's first product, GPSdome, protects against jamming and spoofing of GPS-based systems, which are critical for autonomous vehicles, drones and connected fleets. GPSdome has been successfully proven in the field and sold to over 30 customers globally.

ROUND A | CYBERSECURITY

www.infinidome.com | info@infinidome.com



INNOVIZ TECHNOLOGIES

Innoviz delivers the vision and intelligence required for the mass-production of autonomous vehicles. Our commercially available, solid-state LiDAR sensors and perception software enable autonomous vehicles to understand and navigate their surroundings with unparalleled vision and at a price-point unrivaled in the industry.

ROUND B | ADAS

innoviz.tech | lirone@innoviz-tech.com



INPRIS

Inpris introduces an up to date, distraction-free technology and OS to solve the current problem of driver distraction, as well as the future of in-car HMI technology to answer the upcoming challenges of the automotive industry.

ROUND A | IN CABIN

www.inprisltd.com | info@inprisltd.com



INSIGHT ACOUSTICS

Free space speech capture that identifies both the location of the speaker in the car and his identity. The solution is based on optically (camera) guided acoustic beam-former (dynamic microphones) allowing us to capture quality speech of the driver and passengers at a signal-to-noise ratio that is not available in the industry until now. This is based on years of research and our IP is already protected by granted patents.

SEED | IN CABIN

www.insightacoustics.com | alon@insightacoustics.com



INTELLIGENT SMART IDEAS

Detection of human intention next to the crosswalk to give early alert about upcoming dangerous situation upon them. We use with smart method of reality ai, combined with human brain insight and smart system who contained smart camera and embedded system.

SEED | GENERAL

www.intelligentsmartideas.com

info@intelligentsmartideas.com



INTUITION ROBOTICS

Intuition Robotics is developing digital companion technologies that brings hardware to life. This proprietary cognitive AI technology ushers in a new era of mobility intelligence in which the car will proactively engage the driver with a branded, persona-based, multi-modal agent in a personalized and delightful manner.

ROUND B | IN CABIN

www.intuitionrobotics.com | gad@intuitionrobotics.com



IONTERRA

IonTerra develops an intelligent cognition software platform based on patent pending technology. It introduces a new approach for getting past current limitations of computing power, time to market and reliability of ADAS and Autonomous Vehicle systems. The platform provides capabilities of enhanced vision, cognition, and sensor fusion, while removing security vulnerabilities, providing a holistic approach for meeting safety standards & simplifying the integration process for the OEM.

ROUND A | ADAS

www.ionterra.com | thorsten@ionterra.com



IPHYSICIST

iPhysicist, a worldwide leading Electro-Optical and optical systems R&D company, deliver innovative optics to increase imaging consumer devices performance and manufacturability, by providing a novel optical design and advanced manufacturing methods optimized for mass production.

ROUND A | ADAS

www.iphysicist.com | eli@iphysicist.com



IVOBILITY

Today, there are more than 2 billion vehicles worldwide. These vehicles are not autonomous. IVO, the Robotic Driver, can automise them in minutes. IVO has all of the sensor, computing power, and actuators, necessary to drive the vehicle autonomously, without modifying the vehicle.

SEED | ADAS

ivobility.com | tzvika.goldner@gmail.com



JIFLEET

JiFleet provides a single focal point to connect any connected vehicle with any fuel/energy reseller and provides additional services on top of this link: real-time risk management, fuel management, fuel payment, fuel financing, integration with fleet management platforms, etc.

SEED | CONNECTIVITY

www.jifleet.com | tzahi@jifleet.com



JUNGO CONNECTIVITY

CoDriver is an innovative camera-based driver monitoring solution for the ADAS market, enabling Level 3 implementations of handoff between semi-autonomous vehicles and the driver and enabling the transition to fully autonomous vehicles by providing full cabin monitoring.

Round B | ADAS

www.jungo.com | codriver@jungo.com



KARAMBA SECURITY

Karamba Security seals the vehicle computing environment to block cyberattacks without causing performance drag. By building deterministic security into the fabric of ECU software, we've created the self-defending vehicle. With Automotive Control Flow Integrity (CFI) Karamba Security doesn't rely on updates, protection is always on, remaining stable over the life of the car or truck. It's safe and secure by design.

ESTABLISHED | CYBERSECURITY

karambasecurity.com | contact@karambasecurity.com



KENKO TECHNOLOGY

Kenko is a science driven Emotion AI. We have gathered top data science talents and world-class researchers to make emotions measurable. Digitizing human emotions enables endless applications in health, performance and lifestyle. It is a subscription-based API/SDK that utilizes AI algorithms to extract emotional state from physiological sensors data. Using physiological measurements enables our customers to get emotions data without compromising usability and privacy.

ROUND A | IN CABIN

www.kenko.tech | contact@elegantmonkeys.com



KMOEYE

Kmoe's goal is to provide an artificial vision technology. This technology is an outcome of about four decades of research in neurophysiology and holography. The technology is superior to existing deep learning technologies in several aspects, like having a fixed set of filters for any type of visual information and by creating a process with no hidden layers. The technology will be implemented in autonomous applications.

ESTABLISHED | ADAS

www.kmoe.com | nadav@kmoe.com

L7 DEFENSE

Autonomous security for mobility.

ROUND A | CYBERSECURITY

www.l7defense.com | yisrael@l7defense.com



LAKURUMA

Lakuruma offers a patent-pending optical communication vehicle-to-everything (OC-V2X) system that can be used for public transportation, cross-roads and junctions, mining/underground vehicles, and futuristic drone-vehicles communication. Our system has faster data transfer, larger bandwidth, and improved link quality, and is insensitive to cyber-attacks, hacking, electronic warfare and eavesdropping. Our unique business plan allows many industry sectors to benefit from our product.

SEED | CONNECTIVITY

amirhand@hotmail.com



LEO LANE

LEO Lane enables large manufacturing to securely adopt an Additive Manufacturing (AM) strategy

ROUND A | PRODUCTION 4.0

www.leolane.com | mmolcho@leolane.com



LIVERIDE

LiveRide brings to market the world-first AI-driven and cloud-based Internet of Mobility (IoM) platform disrupting the Motorcycle industry. We leverage the most powerful innovation available to provide motorcycle riders with an unparalleled augmented riding experience, active safety assistive measures and actionable insights to assess riding behaviour as well as motorcycle performance.

PRE-SEED | CONNECTIVITY

liveride.io | contactus@liveride.io



LIVESURANCE – RISKPRICE

LIVESURANCE is a patent pending mobile application for car driver. RISKPRICE is a cloud-based service that analyses in real time all the user's data providing a web platform for the back-office insurer back analyses and a API for the telematics market. it is a new business model and a new payment method which will reinvent car insurance.

PRE-SEED | CONNECTIVITY
harari_z@netvision.net.il



LIVEU

LiveU's teleoperations platform enables remote driving and remote assistance for autonomous vehicles. Using our cellular bonding solution, we provide high quality video with very low latency and excellent reliability. Telemetry, high speed data and two-way audio are also supported. The solution can be provided as an add-on for existing vehicles, such as for test vehicles or as an embedded SW solution to be integrated into an AV platform for commercial deployments.

ROUND B | GENERAL
drive.liveu.tv | dorone@liveu.tv



MANTARRAY

Revolutionizing mmWave antennas technology. Mantarray is solving mmWave antenna challenges by using a radically different approach that yields tremendous benefits over the existing traditional mmWave antenna designs. Unmatched performance allows to achieve full allocated BW, ultra-low cross pol, that maximize sys. performance. Mantarray is a startup, founded by two top leaders and innovators in antenna design. The company focuses on high-end mmWave antennas for autonomous vehicle app. and 5G comm.

PRE-SEED | CONNECTIVITY
www.mwantarray.com | kdavid@mwantarray.com



MAPPO

Mappo is a content layer, on the car navigation map. Mappo is upgrading of the car experience. Mappo harvest with her in-house algorithm, endless number of texts (including music, movies, podcast, TV series) location-based episodes- and layer them on a map. Mappo provide Points of Interest - globally. The company allows the passenger to follow Sherlock Holmes in London; Vine yards in Italy; Rocky in Philadelphia or Harry Potter in England. Mappo is 'content on your way'.

SEED | IN CABIN
www.mappo.world | deddi@mappo.world



MARADIN

Maradin Ltd. provides one of the world most advanced MEMS-based scanning solutions, serving as the core component of laser-based Sensors and Displays. Maradin's solution comprises of MEMS based scanning mirrors, Controllers and timing software, for automotive LiDAR and display applications. As of today, Maradin is under evaluation of its scanning solution at major Tier#1 companies.

ROUND B | ADAS
www.maradin.co.il | dana.shachaf@maradin.co.il



MASTERKEY DIGITAL

ACDC_net is a unique solution to protect your automobile brand. Our technology prevents successful cyber-attacks including ransomware and spoofed messages from reaching the driver and passengers making sure all messages arrive from the vendor. Our technology produces meta data for any on screen app usage giving OEMs ways to maximize in vehicle big data analysis for improved customer services and monetization purposes.

SEED | CYBERSECURITY
www.masterkey-digital.com | liad@masterkey-digital.com



MATHEMATIC.AI

Mathematic.ai turns algorithmic challenges in uncharted waters into plug and play production solutions. We boost data driven organizations beyond commodity methodologies and skills to extract value from machine learning, AI and high impact, non-trivial algorithms. We architect, design, develop, analyze, scale and enhance Algorithms, Machine Learning and Artificial Intelligence for major industries.

ESTABLISHED | GENERAL

www.mathematic.ai | shlomo@mathematic.ai



MDGO

MDGo has developed a real-time accident analysis based on advanced AI algorithms and ML models. Relying only on existing vehicle sensors, MDGo generates a report regarding the vehicle damage and the type & severity of the passenger's injuries. MDGo technology offers a life-saving feature that can provide first-responders with a detailed medical report in real-time (saving up to 44% of crash fatalities) and a new revenue stream supporting claim automation efforts of insurance carriers.

ROUND A | IN CABIN

www.mdgo.io | eliana@mdgo.io



MOBILEYE AN INTEL COMPANY

Mobileye is the global leader in the development of vision technology for Advanced Driver Assistance Systems (ADAS) and autonomous driving. We have over 600 employees continuing our 17 year tradition of developing state-of-the-art technologies in support of automotive safety and autonomous driving solutions. Mobileye is a Tier 2 automotive supplier working with all major Tier 1 suppliers, covering the vast majority of the automotive market (programs with 27 OEMs as of December 2016).

ESTABLISHED | ADAS

www.mobileye.com



MOODIFY

Moodify the "emphatic car system" is developing a unique cost-effective solution based on AI and neurobiology, to predict and prevent human conditions that endanger the vehicle occupants, such as driver microsleep, stress, motion sickness, discomfort, etc. Moodify's interventions include an innovative multi-channel fragrance diffuser that dispenses proprietary chemically synthesized human pheromones and other active scents.

ROUND A | IN CABIN

www.moodify.today | ayalon@moodify.today



NANOLOCK SECURITY

NanoLock prevents overwriting, modification, manipulation erasure and ransomware attacks on firmware, boot image and critical applications in all ECU/MCU and Connected devices. On top of that NanoLock enable secure update from cloud-to-flash to ensure the integrity and authenticity of updating firmware. In addition, provide trusted management for managing ECU/MCU includes attacks that been prevented, version control etc.

ROUND B | CYBERSECURITY

www.nanolocksecurity.com | yonik@nanolocksecurity.com



NANOSCENT

NanoScent is making scents readable with its proprietary chemical sensors alongside with machine learning software. The company is focused on Industry 4.0 offering solutions for environmental monitoring, production quality control and predictive maintenance. To date the company is conducting pilot projects with large companies such as Sumitomo Chemicals, Kimberly Clark and others.

ROUND A | PRODUCTION 4.0

nanoscentlabs.com | lyuba@nanoscentlabs.com



NEO BY E100 (Poland)

NEO by E100 is a white-label solution connecting cars with petrol/charging stations. Solution: a) allows OEMs to introduce payments for fuel and charging w/o leaving the car via mobile or car OS apps, b) is a step towards autonomous cars with option of paying independently, c) provides fuel retailers and charging services with a direct contact to OEMs and their customers. Company is funded by owners of E100 Group, a leading fuel card provider in CEE region (~\$1B turnover in 2018).

PRE-SEED | IN CABIN
neo100.io | hello@neo100.io



NETEERA

Neteera is a Jerusalem-based start-up founded in 2015 by a group of hi-tech veteran executives, including the CEO of Mobileye (NYSE: MBLY) Aftermarket. Our remote biometric sensor enables to understand health, stress, attention. The major use-cases for our solution are driver monitoring & fatigue detection, occupancy detection, and passenger comfort level detection.

ROUND A | IN CABIN
www.neteera.com | maria.levin@neteera.com



NEWSIGHT IMAGING

Enabling 3D depth vision, Newsight is everywhere! With integration in industrial and consumer-level robotics, automotive and mobile applications, Newsight Imaging offers reliable, accurate and affordable solutions. Named as 2018 Cool Vendor by Gartner in the Novel Sensors Category, Newsight's disruptive technology, embedded in its CMOS Image Sensors chips overcomes machine vision challenges, considered unsolvable until now.

ROUND A | ADAS
www.nstimg.com | michal.cooper@nstimg.com



NEXAR

Nexar® makes dash cameras smart by pairing them with the Nexar app to connect drivers to the world's first cellular based, real-time, vehicle-to-vehicle network. That network collects real-time roadway data to help Nexar drivers get where they're going more safely and efficiently. Nexar gives drivers the peace of mind knowing that, if something goes wrong on the road, Nexar will automatically detect and record the video and sensor data providing proof of what happened.

ROUND B | CONNECTIVITY
www.getnexar.com | hilly@getnexar.com



OPSYS TECH

OPSYS Pure solid-state Lidar is a full semiconductor base solution with no moving parts, high reliability, high resolution and fast scanning. The Fully Addressable 2D-Vcsel array combined with a single chip Silicon back-plane enables multi beam scanning, the scan rate is 1000 frame/Sec raw data, 60 frame/sec after 16 averages. This technology enables fully automated production assembly, highly scalable COGS.

ROUND A | ADAS
www.opsys-tech.com | guy.gertel@opsys-tech.com



OPTIMA DESIGN AUTOMATION

Optima-DA is on the forefront of modern semiconductor verification, producing next-generation solutions for rigorous automotive electronic development environments. Optima-DA has produced revolutionary, ultra-high-performance fault simulation technology, key to verifying that devices meet the ISO 26262 random fault requirements.

SEED | CONNECTIVITY
www.optima-da.com | habib@optima-da.com



ORYX VISION

Oryx builds a game-changing automotive LiDAR (Light Detection and Ranging), based on a radically innovative light sensing antenna. A coherent flash system with no moving parts, it achieves the depth vision performance required for autonomous driving – with the simplicity and robustness of a digital camera. The company is based in Israel and backed by blue chip investors.

ROUND B | ADAS

www.oryxvision.com | adia@oryxvision.com



OTAIOT

Otaiot develops products that constantly monitor the interior and the exterior of a vehicles and provides alerts in real time both to the driver and to the fleet manager. Among the company products are SenseBridge, a solution that is aimed to prevent vehicles collision with bridges and sign stands and another product called SenseCar that senses the interior of the car and alert on problems inside the car.

PRE-SEED | CONNECTIVITY

www.ota-iot.com | eladkaner@gmail.com



OTONOMO

Otonomo provides the first neutral automotive data services platform that simply and securely paves the way for new apps and services that benefit global drivers, passengers, municipalities, and companies in the transportation ecosystem.

ROUND B | CONNECTIVITY

otonomo.io | olivias@otonomo.io



OTORIZE

Otorize is the proven solution for detecting cognitive impairment. It's a simple yet breakthrough app that can detect cognitive impairment in seconds. It is NOT intrusive – NOT biological – NOT chemical – It does NOT use membranes or filters and there is NO need for maintenance. Being a cognitive test, 100% digital, IT IS effective in detecting impairment caused by any substance: alcohol, cannabis, drugs, and more. Otorize can reduce accidents in the Workplace, or those related to DUI.

SEED | IN CABIN

www.otorize.com | andres@otorize.com



OTTOPIA

Ottopia's mission is to unlock the full potential of autonomous mobility via teleoperation (remote human assistance). Ottopia is the only company that develops and provides all the essential technologies to make teleoperation an automotive-grade reality.

SEED | ADAS

ottopia.tech | amit@ottopia.tech



OVO AUTOMOTIVE

OVO Automotive is a cloud-based apps casting service for connected vehicles, allowing OEMs and dealers to centrally provide their customers with a rich, updated and phone/car inter-operable connected-car experience. OVO supports existing IVI (In Vehicle Infotainment) systems and operating systems, delivers native apps, and empowers OEMs and dealers with real-time monetizing opportunities and customer care through an enterprise-grade secured service.

PRE-SEED | IN CABIN

www.ovo.auto | glederer@ovo.auto



PERSONALICS

Personalics is a personalization platform, empowering automotive brands with automated, personalized conversations. Our platform digests unlimited data sources, such as vehicle telematics, clickstream behavior, and third-party data, and transforms any type of customer communication (e.g. via newsletters / SMS / push), into personalized stories combined of content and product recommendations, communicated on a daily basis, with each individual customer.

ROUND A | IN CABIN

www.personalics.com | ohad@personalics.com



PHANTOM AUTO

Phantom Auto provides a teleoperation-as-a-service solution for all vehicles, ensuring maximum vehicle safety and uptime. The company is headquartered in Silicon Valley and operates a major R&D Center in Tel Aviv, Israel.

ROUND A | ADAS

www.phantom.auto | jordan@phantomauto.com



PLACID

PLACID develops a Centimeter-Grade Localization System. The system is essential for Autonomous Vehicle Navigation, advanced Intelligent Transportation Systems (ITS) services, Virtual Infrastructure and Pedestrian Smartphone Localization. The system is a key enabler for integrating multi-modal traffic into a unified, holistic, door-to-door system. The system is also a key enabler for V2V applications, needing accurate relative vehicle localization.

SEED | ADAS

www.placidmobility.com | ronen.nakash@placidmobility.com

PLACID

POINTER TELOCATION

Pointer's innovative and reliable cloud-based software-as-a-service (SAAS) platform extracts and captures an organization's critical mobility data points – from office, drivers, routes, points-of-interest, logistic-network, vehicles, trailers, containers and cargo. The SAAS platform analyzes the raw data converting it into valuable information for Pointer's customers providing them with actionable insights and thus enabling them to improve their bottom line and increase their profitability.

ESTABLISHED | CONNECTIVITY

www.pointer.com | sales@pointer.com



RADIOMIZE

JustDrive is an AI Virtual Assistant embedded in an IoT steering wheel, based on human-machine interactions, controlled by touch gestures and driver's voice, analyzing 1,500 different risk variables of the human factor in real-time.

SEED | IN CABIN

www.justdrive.ai | shmulik@radiomize.com



RADSEE TECHNOLOGIES

RadSee RF Radar (patented) identifies and analyzes both dynamic and static objects in its environment, providing real-time full 4D video-like image data – raising the bar for true object recognition in all weather conditions. Its accuracy and sensitivity is superior to other competing products in the market thanks to its novel antenna, mechanics and algorithm – offering competitive pricing as well.

SEED | ADAS

www.radsee.com | arnon.afgin@gmail.com

RadSee



RAVIN AI

Ravin creates trust in the automotive sector by inspecting vehicle damage using standard cameras and AI. Ravin's unique technology turns off-the-shelf cameras – CCTV types or mobile phone cameras – into advanced inspection tools. Car rental, sharing, dealers and insurance companies can then charge customers based on precise data, avoid potential disputes, and optimize their claims & maintenance activities.

SEED | GENERAL
ravin.ai | info@ravin.ai



REGULUS CYBER

Cyber Defense for Sensors' Automotive, Maritime, Aviation, Drones and Infrastructure. Regulus is the first company dealing with sensor security, enabling uninterrupted, continuous operation under malicious attacks or accidental interference to sensors. From GNSS (Global Navigation Satellite System) to LiDAR and Radar, sensors are critical components across a wide range of applications.

ROUND A | CYBERSECURITY
www.regulus.com | roi@regulus.com



RFISEE

RFISee is developing the world's first 4D imaging-radar-on-1-chip, providing the next generation ears and eyes for autonomous vehicles. The high-resolution low-cost radar sensor will generate real-time 3D location and velocity map of cars' surrounding objects, enabling a mass market of safer cars and even auto-driver that will massively disrupt the transportation industry with new modes and business models that will have a far-reaching impact on society.

SEED | ADAS
www.rfisee.com | info@rfisee.com



RIDE VISION

Ride Vision develops an Advanced Rider Assistance System (ARAS) for motorbike accidents prevention. Ride Vision utilizes standard cameras and hardware with a fusion of computer vision & deep learning algorithms on the edge to predict and alert on upcoming hazards, without disturbing riders' focus.

ROUND A | ADAS
ride.vision | uri.lavi@ride.vision



ROADIO

Roadio is looking to revolutionize the road trip experience, by turning it into an interactive, fun and enriching game based on location and contextual insights. Our vision for the future ride is a bonding experience and a quality time of the passengers, connecting them with the area around them in a completely new way.

PRE-SEED | IN CABIN
www.facebook.com/roadioride | michael@radio.io



ROBOT AI

RobotAI makes robots understand humans. We develop vision-based technology that enables robots to manipulation objects and navigate indoor. Moreover, we greatly simplify robotics programming, making it simple and accessible. Right now, we are focused on applications in Industry 4.0, but the technology is general.

SEED | PRODUCTION 4.0
www.robotai.info | uri.dubin@robotai.info

RobotAI/

RUNEL NGMT

RunEL introduces the Sparq-2020 System on Chip (SoC) for 5G mobile networks infrastructure equipment such as: Base Stations and Small Cells. The Sparq-2020 is a revolutionary 5G solution that complies with the 5G 3GPP standard (REL15) PHY and MAC layers specifications. This unique solution is optimized for Ultra Reliable Low Latency Communication (URLLC) with record breaking latencies below 500 microseconds. The Sparq-2020 is ideally suited for Smart Transportation applications.

ROUND A | CONNECTIVITY
www.runel.net | israelk@runel.net



SAFEMODE

SafeMode is a Driver-centric software to empower fleets and shard mobility platforms with automated tools for driver's management and benefits their drivers for decent driving. In a world that fleets have data but trapped without an ability to do drive any action with that, SafeMode's behavioural AI technology not just to save managers time, but the only platform to proactively modify driver's behaviour while increasing their retention and loyalty.

SEED | CONNECTIVITY
www.safemode.co | ido@safemode.co



SAFERIDE TECHNOLOGIES

SafeRide Technologies is the provider of vSentry, the industry-leading multi-layer cybersecurity solution for connected and autonomous vehicles that combines state-of-the-art deterministic security with a ground-breaking AI profiling and anomaly detection technology to provide future-proof security. SafeRide provides OEMs, fleet operators and automotive suppliers early detection and prevention of cyberattacks, and helps to avoid financial damage, prevent reputation loss, and save lives.

ROUND A | CYBERSECURITY
www.saferide.io | danny@saferide.io



SAVERONE

SaverOne is an innovative startup company aimed at leading a safe driving by eliminating the Texting-While-Driving phenomena that has become a global problem! SaverOne In-Vehicle-Protection-System assures that any driver in a vehicle equipped with SaverOne system, will be able to use only applications that are permitted by the local laws, thus prevents up to 25% accidents. Our cutting edge, patent pending technology, combined with our passion enable us to offer the best-in-class solution.

ROUND A | IN CABIN
www.saver.one | amig@saver.one



SEEBO

Seebo is a pioneer in process-based Industrial AI, with solutions to predict and prevent disruptions in manufacturing - quality rejects, scrap, and unplanned stoppages - due to process disturbances. Using the Seebo Industrial IoT Platform, we model the customer's production line processes and knowhow, together with data from OT and IT systems, into machine learning - without requiring the customer to master data science.

ROUND A | PRODUCTION 4.0
www.seebo.com | oren.ezra@seebo.com



SILENTIUM

Silentium, Silence in a Chip. Leading the way in active acoustics and sound control. Silentium's mission statement is to become the world leader and partner of choice for innovative active sound and noise cancellation solutions for the transportation, consumer and related industry sectors. Silentium's focus is working with OEM's to help them to reimagine their products by providing the world's best Active Acoustic Technology as a solution from prove of concept to mass production.

ROUND C | IN CABIN
www.silentium.com | amir@silentium.com



SIXDOF SPACE

Sixdof Space installation-free technology leverages existing room lights, without modification, to serve as location beacons. Embedded in any manufacturer's existing hardware, our products will report accurate position at a very high speed, to any host system. This patent-pending approach yields a product with the unique and sought-after combination of low-cost, low power, and a game-changing latency as low as 1ms.

ROUND A | ADAS

www.sixdof.space | mark@sixdof.space



SOFTTRIDE TECHNOLOGIES

SoftRide provides robust and feasible autonomous driving in geo-fenced and simple driving areas based on its unique multi-layered maps and proprietary algorithms that are embedded inside those maps. The maps include physical data and metadata that simplify the autonomous driving problem, as it reduces complexity and improves performance across the autonomous driving stack, including localization, perception, and driving decisions.

SEED | ADAS

www.softride.tech | yonatanh@softride.tech



SONICLUE

SONICLUE develops a technology that detects and diagnoses current and impending vehicle malfunctions through sound. By implementing machine learning and signal processing, SONICLUE's solution allows auto repair shops to detect malfunctions within seconds and offer preventive maintenance to their customers.

SEED | CONNECTIVITY

www.soniclue.com | assaf@soniclue.com

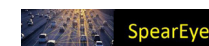


SPEAREYE

By using these 3 elements: 1. A HD-map, high definition map, which includes road coordinates, lanes and objects. 2. Localization- sending exact place (coordinates) of each vehicle on road. 3. Wireless communication between devices- C-V2X/DSRC. A Birds-Eye-View of the road around vehicle is created to display movement of vehicles in 360 degrees and see their path plan on road. Only by using HD-map & V2X, the vehicle can "see" all vehicles around, and use Platoon.

SEED | CONNECTIVITY

speareye.com | barak@speareye.com



SQREAM

SQream has redefined big data analytics with SQream DB, a complementary software defined SQL data warehouse harnessing the power of GPU to enable fast, flexible, and cost-efficient analysis of massive datasets of terabytes to petabytes. SQream DB is now available in miniature off-the-shelf devices to enable massive big data crunching on the Edge for mobility and IoT use cases.

ESTABLISHED | GENERAL

www.sqream.com | info@sqream.com



TACTILE MOBILITY

Tactile Mobility is the world's leading tactile data and sensing company for OEMs, fleet managers, road authorities and municipalities. The company's unique technology, which leverages vehicles' embedded sensors, collects "first principle", real-time data and turns it into actionable insights—e.g. vehicle-road dynamics—enabling smart and autonomous vehicles to "feel" the road under their tires. These insights greatly enhance vehicle intelligence as well as ride safety and dependability.

ROUND B | ADAS

www.tactilemobility.com | eitan.grosbard@tactilemobility.com



THE SMARTIRE

Future technology in 4 wheels We are developing a device that is built into each of the four wheels of the vehicle and its main function is to monitor the tire pressure and fill automatically the missing air accordingly, thus solving the problem of the user's indifference to air pressure in the tire. The system's innovation is to provide a real-time solution for the driver and to alert when air pressure is lost, at any time, while it designed to withstand extreme conditions.

SEED | GENERAL

www.beinspired.co.il | yonatanshemesh@beinspired.co.il



THEWHOLLYSEE

TheWhollySee is a seed-stage start-up on a mission to build large, diverse, and high-fidelity image datasets for the training and certification of AI brains that drive autonomous vehicles.

SEED | ADAS

tw.s.ai | dan.yanson@thewhollysee.com



TRAFFILOG

Traffilog brings together driver and vehicle insights, predictive maintenance services and more. Driven by machine learning and Big-Data technology, enabling our customers' maximum uptime, performance, and safety. Our connected vehicle solutions improve customer relationships and ensure excellent user experience.

ESTABLISHED | CONNECTIVITY

website.traffilog.com | lahavs@traffilog.com



TRIEYE

TriEye is a ground-breaking solution, based on almost a decade of academic research, that enables HD imaging under any weather/lighting conditions by using a cost-effective shortwave infrared (SWIR) camera. TriEye's SWIR camera is imperative for ADAS and Autonomous Vehicles functionality, reliability, and safety as it provides image data which standard vision cameras just cannot see.

ROUND A | ADAS

www.trieye.tech | ziv@trieye.tech



TUKUORO VOICE OPEN PLATFORM

Tukuoro turns any application and/or device into voice enabled, in any language, accent, device, platform or use case. Tukuoro allows its users to make an accurate & reliable voice interaction. Tukuoro solution processes the voice input within a dynamically created context, to provide an accurate data & results. Using proprietary NLP and ML engine, Tukuoro's solution is self-learning and self-improving with every use of the user.

SEED | IN CABIN

www.tukuoro.com | info@tukuoro.com



UPSTREAM SECURITY

Upstream improves the safety and security of connected vehicles and services built around them by monitoring business critical events and identifying cyber threats in real-time via a centralized cloud-based analysis of multiple automotive data feeds. The solution is 100% agent-less and does not require any hardware or software inside the vehicles. Upstream's solution is already used by millions of vehicles worldwide, making smart mobility safe and secure, for everyone.

ROUND A | CYBERSECURITY

www.upstream.auto | hello@upstream.auto



UVEYE

UVEye provides high-end solutions for automatic external inspection of vehicles, using advanced technologies that include proprietary hardware combined with deep learning and computer-vision algorithms. UVEye's, AI powered technology, scans the entire vehicle to identify any security or safety issues, including analyzing the undercarriage and tires. UVEye can detect issues with a vehicle throughout its entire lifecycle - from the assembly line to after it's been taken off the road.

ROUND B | GENERAL

www.uveye.com | daniela.t@uveye.com



VALENS

Valens is a fabless semiconductor company, headquartered in Israel. Valens' chipsets bring a simple, holistic, and cost-effective approach to in-vehicle connectivity, with unprecedented multi-Gigabit throughput over simple wiring (single UTP for up to 15m), extraordinary capabilities to handle EMC requirements without compromising performance, convergence of several native interfaces over the same link, and scalable architecture, for multiple applications.

ESTABLISHED | CONNECTIVITY

www.valens.com | ronnie.finer@valens.com



VAYAVISION

VAYAVISION's leading environmental perception solution provides vehicles with crucial information on the dynamically changing driving environment for safer and reliable autonomous driving. The software solution encompasses state of the art raw data fusion with up-sampling, AI and computer vision. Working with leading OEMs and Tier 1's globally, VAYAVISION is paving the way for comprehensive autonomous vehicle environmental perception.

SEED | ADAS

www.vayavision.com | arie.gavriely@vayavision.com



VAYYAR

Vayyar's sensors provide 3D Imaging for both In-Cabin and Car Exterior applications. They can track occupant position and monitor posture, breathing patterns and activity levels - all of which can be used to detect a baby locked in a vehicle as well as airbag deployment optimization and gestures for infotainment control. For car exterior our technology classifies surroundings for parking assistance, obstacle recognition, collision-avoidance and automatic distance/speed control.

ESTABLISHED | IN CABIN

www.vayyar.com | tal.kanetty@vayyar.com



VECTORAIC

Non line of sight visibility of any object on the road. The method for determining the position and speed of the vehicle relative to other vehicles is performed without the use sensors, Collision predicting algorithms, Interpretations of the vectors field and Anticipate possible future collisions, Easy to implement, cellular devices on the current cell net. Driver learning; We "learn" the driver, average speed, acceleration time, compliance with traffic signs, response time etc.

SEED | CONNECTIVITY

www.vectoraic.com | lior@vectoraic.com



VIZIBLEZONE

Software based, cost effective, vehicle embedded 'Pedestrian Detector', for the purpose of discovering pedestrians who are located out of a driver's line of sight and in any adverse weather conditions. Pedestrians who approach a moving vehicle, broadcast their presence using their smartphone's built in facilities. A counterpart device in the vehicle, will process the received presence information and our AI-based behavioural model will determine the risk and notify the driver accordingly.

SEED | ADAS

www.vizible.zone | shmulik@vizible.zone



VOYAGE81

Introducing scalable, low-cost hyperspectral vision to the automotive market. Voyage81's software-only solution augments existing camera sensors with material sensing based object detection capabilities and radically improved low-light performance.

SEED | ADAS

www.voyage81.com | niv@voyage81.com



WEDRIVE TECHNOLOGY

WeDrive's suite of solutions for the transition to autonomous public transportation will create the confidence for concerned stakeholders (operators, drivers, regulators, tourists, the disabled) to embrace the inevitable global paradigm shift. Developed by high-tech veterans, the patent-pending WeDrive system will accelerate by years society's adoption of autonomous transit technology with a central priority of ensuring a safe and seamless transition to autonomous urban fleet operation.

PRE-SEED | GENERAL

www.wedrivetech.com | info@wedrivetech.com



WHITE RAVEN

White Raven is an AI-based visual positioning software company. Our technology uses state of the art computer-vision and deep learning techniques to recognize buildings, landmarks, and other objects in the physical world and can infer a moving camera's location, direction, and what it's looking at. This technology delivers superior positioning accuracy and shines in areas where GPS connectivity is not accurate.

SEED | ADAS

www.whiteraven.ai | dudy@whiteraven.ai



ITURAN

Founded in 1994, Ituran (ITRN) is the world's leading developer and manufacturer of advanced telematics solutions and services for professional fleets, insurance companies, auto brands, governmental, utilities, and more. ITURAN is a one stop shop for the entire end-to-end solutions including hardware, software and 24/7 expert technical support and personalized customer services.

ESTABLISHED | CONNECTIVITY

www.ituran.com | ran_p@ituran.com





ELECTRIFICATION & ENERGY

ADDIONICS

Addionics redesigns the architecture of rechargeable batteries. With a novel and patent pending 3D metal fabrication method, we enhance performance, mileage, safety, cost and charging time of batteries. Our custom-made structures allow us to tailor our batteries to their conditions of use. Our technology has a fast time-to-market as it does not require to rethink the entire battery supply chain and production line.

SEED | BATTERIES

www.addionics.com | info@addionics.com



AEROSHELA K.D.

We propose ultracapacitors' improvements based on our thin film simple processing and the use of earth abundant, low-cost fabrication processes, based on plasmachemical experience and ultracapacitors work, by an innovative approach of dry nano volume change by low cost plasmachemical systems that allow change of firm body materials and transformation to a precise composite material with a predetermined property for maximum capacitance results.

PRE-SEED | EV

aeroshela.co.il | aero.lahat@gmail.com



ALGOLION

ALGOLiON has developed an algorithm software for lithium batteries that transforms how their safety and reliability is managed. Our solution saves you money, increases your ROI, and protects your products and users. We are the only solution giving you one week warning to prevent fires. The conventional methods, based on hardware, provide an alert only seconds before a hazard. ALGOLiON works by detecting benign changes in cell chemistry early enough for taking appropriate corrective action.

ROUND A | BATTERIES

www.algolion.com | niles@algolion.com



APOLLO POWER

Our innovative technology of flexible solar films opens new opportunities to produce electricity almost everywhere. Our team has developed a unique, patented technology to produce flexible, efficient, light weight and low-cost solar films. With our new technology, the vision of vehicles utilizing solar energy is becoming a reality.

ROUND A | ALTERNATIVE FUELS

apollo-power.com | elad@apollo-power.com



AQUARIUS ENGINES

The Aquarius revolutionary engine-generator is dramatically cheaper, smaller, cleaner and more efficient than existing power generators. It is about to disrupt the market of Power Generators in general and Electric cars in particular. Aquarius' Engines integrated power system is composed of a revolutionary combustion engine and a dedicated electricity generator with an exceptionally high power-to-weight/size ratio. Its unique patented design simplifying and reducing manufacturing processes.

ROUND B | ENGINES

www.aquariusengines.com | maya@aquariusengines.com



CHAKRATEC

Chakratec has developed a unique kinetic energy storage technology, which enables unlimited high-power charge and discharge cycles. Utilizing our proprietary Kinetic Power Booster technology, Chakratec facilitates the deployment of fast EV charging stations anywhere, including locations with a weak grid.

ROUND B | STORAGE

www.chakratec.com | marketing@chakratec.com



DRIIVZ

The Driivz robust and modular EV Charging Management platform enables network operators to efficiently manage their network and provide the best user experience to their drivers. With comprehensive billing capabilities designed for the EV industry and the most innovative energy management solution, the Driivz solution supports any business model and allows the operator to monetize their assets. The Driivz system is already deployed by some of the largest global utility & energy companies worldwide.

ROUND B | CHARGING

www.driivz.com | sigalit.orr@driivz.com



E-WAY

The E-Way Group offers a range of products and services. E-Way Israel offers exceptional electric mobility solutions for consumers, enterprise and government from the leading manufacturers of electric scooters, motorcycles, light utility vehicles and quadricycles. E-Way Engineering works with an array of electric mobility OEMs and regulatory authorities in the design, development and manufacture of electric vehicles, offering specialized QA, QC and vehicle testing.

SEED | EV

ewayisrael@gmail.com



ELECTREON

Electreon Wireless is an Israeli publicly-traded company developing DWPT (Dynamic wireless power transfer) technology. The technology enables a shared infrastructure that significantly reduced the need to charge vehicle's battery during day/overnight and decreases the size of the battery, it can support any type of EV - Buses, Trucks, passengers and is especially suitable for autonomous EVs.

ROUND B | CHARGING

www.electreon.com | noam@electreon.com



ELECTRIQ~GLOBAL

Electriq~Global offers fuel cell-based power generation and energy storage through a safe and cost-effective hydrogen on-demand solution. Using hydrogen-rich liquid fuel operated in ambient pressure, and a low-cost catalyst, it is an active and resilient catalyst for hydrogen extraction from hydrogen-rich liquid fuel.

ROUND A | ALTERNATIVE FUELS
www.electriq.com | roy.kerem@electriq.com



EMOTO – AUTO ELECTRIC

EMOTO – Auto Electric is Israel's EV Superstore with broad array of electric vehicles from 2- and 3- wheel motorcycles and scooters to small trucks and passenger cars. EMOTO works with the leading independent manufacturers to bring you the most relevant electric mobility solution for your needs.

ROUND A | EV
www.emoto.co.il | marc@emoto.co.il



EVR MOTORS

EVR Motors developed the world's lightest, highest power density, and cost-effective electric motors for the automotive industry. Innovation Highlights: Low Weight: 40%-50% lighter than RFPM motors. Low Cost: 20% to 40% lower manufacturing cost than RFPM motors. Multi Voltage: Available in low & high voltages from 48v to 800v. Cool: Coils are cooled directly. Safe: Optimal topology for high power 48v motors. High Efficiency: Above 90% at variable speeds.

ROUND A | ENGINES
www.evr-motors.com | eli@evr-motors.com



FLEXIFUEL

Developing a flexible-fuel engine to be utilized with renewable fuels. Our engine adjusts automatically to any kind of fuel mixture, with no human interference. We focus on engines for light vehicles, to address the traffic problem, air pollution & insufficient parking space in large cities. For both renewable and conventional fuels, enabling a bridge between the old gasoline-based industry and the future's renewable fuels industry, and to reduce the world's dependency on oil.

PRE-SEED | ENGINES
gutmanasa@gmail.com



G.BERES

We are capable to supply all cable needs within the automotive industry from electrical cars to charging applications, trains cabinets, communication devices and fibre optics. We have in-house engineering capabilities starting from cable harnesses to electro-mechanical works.

ESTABLISHED | GENERAL
www.gberes.com | bruno@beres.co.il



GLR TECH

GLR Tech depurates harmful pollutants and, at the same time, generate extra energy from the waste of internal combustion engines and industrial boilers. It is a 3-in-1 solution to reduce air pollution, energy waste, and emissions of particulate matters. Experts see the device as a substitute to gas scrubbers with the benefit to improve system efficiency and, therefore, provide a faster return on the investment. It will be implemented in ships, trucks, locomotives, generators, and boilers.

ROUND A | ENGINES
www.glrtech.solutions | felipe@glrtech.solutions



GREEN ELMF CABLES

New Israeli Technology for Power Delivery & Distribution with Extremely Low Magnetic Field (ELMF) Features Weight and Costs saving along with Reduced Interference and Safe Environment. The ELMF (Extremely Low Magnetic Field) technology allows, for the first time, to manufacture power cables that generate very low magnetic field. ELMF technology is based on EMF cancellation as oppose to protection. It opens the way to design a lighter and cheaper solution for the power distribution system.

ESTABLISHED | CHARGING

www.green-elmf-cables.com

pini@green-elmf-cables.com



H2 ENERGY NOW

Our company takes water and brakes it down to its component parts of Hydrogen and Oxygen through the use of Electromagnetic waves. We are 88.9% efficient, have assembled a team, talked to our customers, filed our patents, presently in Atobe Accelerator part of Azereli College of Engineering. We have reached proof of principal prototype and are involved in its commercialisation presently. Contact us for more information. 2018 NASA iTech finalist.

PRE-SEED | ALTERNATIVE FUELS

h2energynow.com | sonya@h2energynow.com



IRP SYSTEMS

IRP Systems E-mobility – Fast forward, our proven solution extends the vehicle performance range, eliminating the trade-off between torque and speed. Our Hummingbird Motor and Controller provide optimized efficiency and driving range, without compromising on size, weight or cost. The entire system is designed in-house, from System architecture, through Motors Electromagnetic, Mechanics, Electronics, to Control, FW, SW and GUI.

ROUND A | ENGINES

www.irpsystems.com | amit@irpsystems.com



JUSTRIDE

Justride is an Israeli engineering startup. We developed and patented a breakthrough multi-speed transmission optimized to improve the efficiency and performance of electric vehicles. The innovative transmission design delivers a compact multi-speed transmission that shifts gears without disrupting the power delivery. Available for micro-mobility platforms and scalable to automotive and commercial applications. We are now looking for investment and partners to bring our solution to the mark.

SEED | MICROMOBILITY

www.justride.one | yaniv@justride.one



M.ENERGY

We develop a new kind of fuel cell, fuelled by DME (Dimethyl Ether). It will serve as an on-board charger and range extender for electric vehicles.

SEED | ALTERNATIVE FUELS

erlich.ey@gmail.com



MAKE MY DAY

Make My Day is a car software system that uses a unique algorithm and big data in order to provide the optimal route for the EV drivers and connect the driver with businesses, as we combine the driver's calendar and his errands with the status of the EV battery and optimize for him the all day, including the charging time. Operating under a B2B model, the company is currently working with major players in the automotive industry.

SEED | CHARGING

www.makemydayapp.com | info@makemydayapp.com



PIXTIER

GeoTwin by Pixtier is 3D-Digital Twin SaaS platform helping enterprises to manage their infrastructures world-wide, enabling predictive maintenance through vivid 3D fused data.

SEED | GENERAL

www.pixtier.com | dror@pixtier.com



PLASAN

Plasan is a center for excellence in design, development, and manufacturing of composites, providing the automotive industry a wide array of engineered solutions for aesthetic, semi-structural, and structural applications. We offer full-service design and engineering, coupled with expertise in the modeling and simulation of composites, including high strain rates (dynamic simulations), working in collaboration with OEMs to provide optimized solutions in a short time to market.

ESTABLISHED | EV

www.plasancarbon.com | nirk@plasan.com



POLYMERTAL

Polymertal hybrid parts are combination of polymer skeletons and external metal layers to provide the best of both worlds: the look, feel, and performance of metal with the lighter and more economical features of polymers. Polymertal hybrid parts offer significant advantages over metal 3D printed parts: Up to 70% cost reduction, Up to 60% weight reduction, Over 50% reduction in production time, No shape or size limitations.

SEED | GENERAL

www.polymertal.com | ran.carmeli@polymertal.com



POWERMAT

Powermat is the wireless charging pioneer and leader, provider of the largest wireless charging network in the world, and the forefront of inductive wireless charging technology development. Powermat enables OEM providers to offer wireless charging to their customers. Owning the Intellectual Property of essential elements in induction wireless charging, Powermat develops technology that is future-proof and adaptive for the automotive and industrial robot markets.

ESTABLISHED | CHARGING

www.powermat.com | info@powermat.com



POWHERE

Powhere is developing a smart and powerful Electric Vehicle (EV) Charging Assistant which tells drivers when and where to charge the vehicle to best fit their schedule, by predicting the optimal time and location for charging. This creates a stress-free experience by freeing drivers from the constant planning, calculations and anxieties of operating an EV. At the same time, Charge Point Operators (CPOs) gain valuable insights and tools to control the demand side and increase utilization.

SEED | CHARGING

www.powhere.co | amir@powhere.co



SOFTWHEEL

SoftWheel designs, engineers and manufactures optimized electric vehicles platforms making future EVs more efficient, reliable and scalable. Our technology will be the standard for EVs and autonomous delivery vehicles.

ESTABLISHED | EV

www.softwheel.technology
talim@softwheel.technology



STOREDOT

Charging your Electric Car in 5 minutes. StoreDot develops ground-breaking organic and nano-materials to replace known technologies in Li-ion batteries.

ROUND B | BATTERIES

www.store-dot.com | doron@store-dot.com



TANKU

TankU leverages existing CCTV in service stations to increase their profit. TankU harnesses machine learning powered sensor fusion to deliver a one of a kind streamlined and secure fueling payment process, increase loyalty and cut operational costs. The TankU solution is a game changer, providing users with the smoothest experience, fleet managers with maximal control and information. The next generation digital service stations.

SEED | CHARGING

tanku.com | dan@tanku.com



TEVVA ELECTRIC TRUCKS *(United Kingdom)*

United Kingdom based Tevva Electric Trucks designs, develops and manufactures long range electric trucks already used in major fleets such as UPS. Tevva exists to make electric trucks that are a direct swap without compromise from diesel to electric: the same route, the same payload. Tevva eTrucks represent the pinnacle of electrical and automotive engineering, they are available right now and come with a compelling business case.

ROUND B | EV

tevva.com | asher.bennett@tevva.com



ULTRA-CHARGE

Ultra-Charge is an early stage battery startup and looking into developing a new generation of various technologies in the Lithium Ion rechargeable batteries, our offering includes TiO₂Nano-Tube anode material & HV NMS batteries, targeting the emerging markets of EV/E-Buses, Start Stop application, Drones and others. Ultra-Charge is aiming now to continue its development plan, improve performance & scale up the technology, most of our employees are R&D oriented.

ESTABLISHED | BATTERIES

www.ultra-charge.net | kobi@ultra-charge.net



VHOLA

An Embedded In-Vehicle solution, enables control and optimization of the electromagnetic radiation levels inside the passenger cabin, taking into consideration local regulation aspects, cabin occupancy, passenger preferences, driving conditions and other factors.

PRE-SEED | GENERAL

v-hola.com | asaf@v-hola.com



YAMAR ELECTRONICS

Battery management need data from its cells. Transferring this data require dedicated wires. Yamar's semiconductor devices transfer data over the existing high voltage power bus connecting the Li-Ion cells modules. The data consist of the battery cells state of health, state of charge data as well as monitoring commands from the battery management system (BMS) unit. Saving the need for dedicated wires. Yamar's devices are used by customers in 51 countries.

ESTABLISHED | CHARGING

yamar.com | marketing@yamar.com





SHARED MOBILITY

AIGENT-TECH

AiGENT-TECH develops next generation intelligent electric transportation services (leTS) planning and operation platforms, supporting smart cities transportation revolution. Optimizing and managing multi-modal pooling, electrification and automation, AiGENT-TECH improves urban areas standard of living: Reduced traffic congestion Reduced pollution Improved safety and cost of living.

SEED | RIDE SHARING

www.aigent-tech.com | yoav@aigent-tech.com



AUTOFLEET

Autofleet has created the first, truly sustainable, Vehicle as a Service layer, providing an elastic supply of vehicles serving any source of demand. This vehicle-as-a-service layer dynamically leverages unused rental car inventory (and other similar fleets) to offer ride-share operators such as Uber and Lyft additional supply of vehicles while maintaining a seamless experience for the rider. Autofleet has already partnered with the largest fleets on the planet.

ROUND A | FLEETS

www.autofleet.io | adam@autofleet.io



BUCKLEAPP

BuckleApp is a white label platform which allows corporates and municipalities to offer their own tailored ride-sharing solution.

SEED | RIDE SHARING

www.buckleapp.org | shmuelsil@gmail.com



CLICK-INS

Click-Ins is developing an innovative platform getmeIns™ for motor insurance and car rentals industries. By applying its unique DamagePrint™ technology for damage signature matching, Click-Ins detects bogus claims in motor insurance and reveals potential fraud. A hybrid method based on a systematic engineering approach powered by photogrammetry and computer vision, combined with deep learning and 3D modelling allows an unprecedented level of accuracy in car damage inspection.

SEED | GENERAL
getmeins.com | dima@click-ins.com



DAV.CITY

DAV is bringing the micro mobility sharing-economy solution to cities and communities. We developed a smart micro mobility technology that is compatible with privately owned electric vehicles, so communities can build and grow their own shared transportation ecosystem – and reap its rewards. With DAV, It's not just about taking a ride – It's about owning it, too!

SEED | GENERAL
dav.city | team@dav.city



FLEETONOMY

The Fleetonomy next-generation fleet management platform enables mobility service providers to efficiently manage multiple smart mobility services such as ridesharing, dynamic shuttles, car subscription, and on-demand car rental services using the same fleet of vehicles. Fleetonomy's technology is already deployed with global top tier automotive OEM's, car rentals and mobility service operators helping them predict demand, increase utilization and create new revenue streams.

SEED | FLEETS
www.fleetonomy.io | ofir@fleetonomy.io



GETT

Gett Together is a smart shuttle service for corporations that want to ensure their staff have a seamless commute at a price point similar to public transport. With Gett Together you can order your shuttle ride on demand, reserve your seat, track the vehicle and hop on and off anywhere along our fixed route.

ESTABLISHED | TAXI
gett.com | support-il@gett.com



GOTO GLOBAL

GoTo Global is a multi-modal vehicle sharing service provider with a mission to reduce the number of privately-owned vehicles in cities. We do so by offering people multiple ways of travelling from point A to point B including shared cars, mopeds, bicycles and kick-scooters. We cover all the personal mobility needs with one membership and one app. We have our own proprietary technology and operate globally.

SEED | GENERAL
www.goto.global | partnership@goto.global



HERE MOBILITY

HERE Mobility's mission is to create a competitive mobility market, in order to achieve urban mobility efficiency. With cutting-edge technologies, HERE Mobility has created an open and competitive smart mobility marketplace for all transportation services, connecting mobility supply and demand in real-time to empower people and businesses worldwide. Over 500 transportation suppliers world-wide have already joined the HERE Mobility Marketplace with a total of more than 1.5 million vehicles.

ESTABLISHED | GENERAL
mobility.here.com | mobility_info@here.com



HEREO

Founded in 2012, hereO is a complete end-to-end IoT solutions developer enabling leading OEM partners to quickly and seamlessly integrate smart capabilities into traditional consumer products and mobile assets. From cargo, to kick scooters, wearables and everything in between, hereO's flagship Core IoT platform is the go-to solution for companies looking to smarten up their valuable assets and product offerings.

ROUND B | RIDE SHARING
www.hereocore.com | contact@hereo.co.uk



MOBICAR APP

Digitizing the roadside-services sector. Nowadays, there is a need to improve the user experience in addition to ease all the business process. We are doing it by two mobile apps and by CRM web site.

SEED | FLEETS
www.mobicar.co.il | ori@mobicar.co.il



NEURA

Neura intelligently transforms customer engagement by delivering live, actionable insights based on each user's real-world behavior. Brands that utilize Neura's groundbreaking technology adapt to each user's unique needs, delivering contextually relevant, real-time interactions and personalized customer experiences—driving engagement, retention, and monetization.

ROUND A | GENERAL
www.theneura.com | marketing@theneura.com



OPTIWAYS

OptiWays introduces next generation transport optimization solution with a flexible rule engine and cost-driven algorithm that meets the needs of enterprises with complex operational workflows. We save our customers more than 20% on their annual transportation costs, beating existing optimization solutions as well as human experts.

SEED | FLEETS
www.optiways.io | elad@optiways.io



SHAREROUTE

Shared professional minivans on responsive, optimized routes. Door to door and station to station transit. Ordering via app, SMS, IVR, calendar, computer. Real time and advance orders, round trips, sequences, for 3rd parties. Subsidized by destinations: retailers, sport, educational, and cultural institutions and events, medical centers. Ideal for autonomous vehicles. The sequel to private vehicles.

SEED | GENERAL
www.shareroute.com | info@shareroute.com



SLYDE

Slyde is an All-In-One transportation workspace. Slyde upgrades the mass transit fleet inside Smart Cities/Transportation Providers into a smart mobility system and focuses on: •Save time and money — Slyde automates and streamlines processes such as rider assignment, routing, billing and payroll. •All-In-One — Everyone connects through Slyde including riders and customers who connect via the Slyde mobile app. •Improving rider/student security. Slyde is deployed in the USA and Israel.

SEED | FLEETS
www.slydeglobal.com | info@slydeglobal.com



TRANSPORT.NET

Transport.net (Heseim.net) is doing transport surveys and research and promotes intelligent transport systems. The company is now developing a ride sharing technology package - Fairtravel, comprising smart phone passenger and driver applications and a call center controlling them via internet.

PRE-SEED | RIDE SHARING
www.fairtravel.org | yoaveiges@gmail.com

TRAXI

Traxi provides quick access to common features or commands. The simple, game-based interface is straightforward, and easy to locate different tools and options.

SEED | FLEETS
www.traxi.co.il | doron@traxi.co.il



TRUCKNET

TRUCKNET minimizes empty and partly empty heavy-fleet rides and reduces CO2 emissions, by allowing cross fleet optimization. TRUCKNET's platform is a fully automatic, tailor-made to the customer's needs and assessable everywhere without requiring any additional hardware. It is smarter, better and much more user-friendly solution than other similar existing products on the market, because it allows cross company automatic optimization, rather than optimization within the company.

ROUND A | FLEETS
www.trucknet.io | lana.elner@trucknet.io



VIA

Via is re-engineering public transit, from a system of rigid routes and schedules to a dynamic, on-demand network. Via's app connects multiple passengers headed the same way, allowing riders to seamlessly share a vehicle. Via operates in the US and in Europe through its joint venture with Mercedes-Benz Vans, ViaVan. Via's technology is deployed worldwide through dozens of projects with public and private transit operators and universities integrating to power cutting-edge on-demand mobility.

ESTABLISHED | RIDE SHARING
www.ridewithvia.com | yael.marom@via.co.il



WEBUS

WeBus is a transportation service, with the best combination of speed and price. WeBus is an app that connects passengers into a shared taxi, the only active taxi sharing in Israel. WeBus is the first taxi sharing app in the world that addresses and fit passengers who don't usually take taxis and make this service accessible for them and their needs. Flexible routes, flexible prices. Hundreds of customers in a successful pilot and ten crew members ready to conquer!

SEED | TAXI
www.webus.co.il | info@webus.co.il



WHIZZ

Whizz-lines are a new & profitable service for commute, mobility's largest pain. Designed as future robo-shuttle lines, we onboard riders today at high-demand pickup hubs, by harnessing exiting commute seats! Drivers earn hundreds of \$ monthly, for sharing seats on our lines, during their commute. Pat. pend. algorithms utilize untapped data sources to map entire metropolitan areas, identify high demand routes with poor commute alternative, and establish our future autonomous lines.

SEED | RIDE SHARING
eyal@ridewhizz.com





MARITIME

AI.DOCK

We are handling all the paperwork involved in export and import process, from generating export docs to full import customs clearance process for freight forwarders and courier companies. AiDock provides cutting-edge technologies and services offering scalable automation for customs clearance. Founded by a group of passionate entrepreneurs, who started by scribbling their ideas on a piece of paper, today we offer smart and innovative services to the supply chain industry.

SEED | GENERAL

www.aidock.net | eddie@aidock.net



CYDOME SECURITY

Cydome Security develops a disruptive solution detecting and safeguarding the maritime IoT-ecosystem supported by its encrypted data isolation core technology, monitoring and controlling the communication system, sensors and devices on board.

SEED | SAFETY & SECURITY

cydome.io | nir@cydome.io



DOCKTECH

DockTech is a water depth Monitoring & Analysis platform. By connecting in-port vessels such as tugboats, pilot and patrol vessels, and combining their onboard depth data with survey data, we created a real time water depth display that enables ports to better plan seabed maintenance and improve vessels safety.

PRE-SEED | PORT OPTIMIZATION

www.docktech.net | uri@docktech.net



FAST APPLICATIONS

FAST is a white label, branded Software as a Service (SaaS) that can turn any freight forwarder to a digital one in days, FAST tackles the amount of time, effort and money required to develop the transformational tools that turn a traditional freight forwarding company to a digital one, without upfront investments or an in-house programming team. FAST's mission is to turn any traditional freight forwarding company into a digital freight forwarder, helping them create their digital brand.

PRE-SEED | SHIPPING

fast-apps.com | adam.yaron@fast-technologies.com



LOGINNO

Loginno is a logistics AI/Data company, currently focusing both on extracting IoT data from shipping containers and on creative analyses of such data towards clear business, operational and governmental values. Loginno's mission is to create Contopia (Container Utopia), a world where every shipping container is real-time IoT connected, consecutively. After building several disruptive technological and operational advantages, Loginno is now creating the world's first digital shipping company.

ROUND A | SHIPPING

loginno.com | hello@loginno.com



ORCA AI

Orca AI brings cutting-edge technology into the world of maritime, with the mission of building the brain for autonomous ships. Our focus is to aid ships navigate safer at sea, by providing an intelligent collision avoidance system. The system analyzes the marine environment in real time, aggregate data from sensors, detect obstacles and alerts possible collisions, to provide a safer alternative navigation route.

SEED | AUTONOMOUS VESSEL & COMPONENTS

www.orca-ai.io | yarden@orca-ai.io



PICK A PIER

Pick a Pier is a digital platform that enables marinas to optimize the management of their berthing supply while enabling sailors to order a berth online at the click of a button. Pick a Pier's system enables marinas being more attractive and accessible to boaters from around the world, driving new traffic to the marina and the surrounding city while raising the level of service and benefits for existing customers.

SEED | LEISURE

www.pickapier.com | idan@pickapier.com





DRONES & AVIATION

AIROBOTICS

Fully automated drone platform – world first to be certified to fly commercial drones without a human operator. Airobotics empowers enterprise companies and governments around the world to leverage the power of drones without the need for skilled and expensive drone operators. Airobotics' robotic airbase, multi-sensor drone and aerial analytics automate the digitization of sites and cities. Secured \$110M in funding to date.

ESTABLISHED | GENERAL
www.airoboticsdrones.com
marketing@airoboticsdrones.com



AIRSCORT

Eliminating humans from the most critical phases of drone flight, Airscort's solutions are the final step toward deploying fully autonomous drones in the field. Airscort's drone agnostic, modular, and military-grade docking and charging stations enable on-demand, remote, and cost-effective drone operations. Already deployed in the defense and HLS sectors, Airscort's patented technology will soon unleash the potential of the \$150 billion commercial drone industry.

SEED | COMPONENTS
www.airscort.me | itai@airscort.me



ARTSYS360

3D-360° Micro Radar – a spin-off of the Technion, breakthrough technology for 3D - Urban Transportation Mobility (UTM) managing drones' deliveries, Physical intrusion detection system (PID) for Anti Drones system detecting and tracking drones, human and vehicles, protecting Airports, Prisons, power-stations, stadiums and more...

ROUND A | SYSTEMS & SOFTWARE
www.artsys360.com | meir.zorea@artsys360.com



ATLAS

Atlas is a leading designer and manufacturer of Autonomous and Cost-Effective Unmanned Aerial Systems for professional use-cases and works with prominent defense, security and infrastructure institutions in the U.S., E.U. and Israel. Founded in 2015 by Aerospace and Robotics professionals with a vision to disrupt the UAV sphere, Atlas utilizes its proprietary and cost-effective technology to provides defense and security users with valuable data, quickly and safely, through advanced, highly robust and easy-to-use products.

ROUND B | AERIAL VEHICLE

www.atlasdynamics.eu | guy@atlasdynamics.eu



DESIGN SHABTAI

At DS we shape the future of mobility, Transportation, and products through technology, innovation, and forward thinking. Resolving problems while providing convenient and sustainable solutions. DS is an experienced design studio with a demonstrated track record working in transportation design and the start-up industry. Skilled in product and transportation design, CAD, Design Management, Sketching and concept development. we will supercharge your brand.

ESTABLISHED | AERIAL VEHICLE

www.behance.net/shabtai | designshabtai@gmail.com



DROMOS (Germany)

Dromos is a dedicated, confined autonomous transport system for urban areas. It's engineered for the critical capacity range of 5,000-20,000 people per hour (plus freight) – thus, exceeding the capabilities of Robotaxi and autonomous buses by far. Dromos costs about half to build and operate and takes half the urban space compared to conventional systems. As of today, Dromos has signed-up all relevant urban transport partners, as well as cities interest in building a first Dromos system.

ROUND A | PUBLIC TRANSPORTATION

www.dromos.network | martin.duerr@dromos.network



FLYTREX AVIATION

Flytrex is building the largest B2C on demand delivery company. Replacing high cost personnel with autonomous drones. Flytrex was the 1st in the world to deploy a working delivery system in the Reykjavik, the capital of Iceland last year. Flytrex is now part of the US FAA's commercial drone integration pilot program, paving the way for commercial drone deliveries in the US.

ROUND B | SERVICES & APPLICATIONS

www.flytrex.com | info@flytrex.com



GEODRONES

GeoDrones is developing a 3D mapping solution for urban environments for autonomous vehicles, both cars and drones.

PRE-SEED | AERIAL VEHICLE

www.geodrones.co.il | erez.simon@geodrones.co.il



HIGH LANDER

High Lander developed an end to end drone flight plan solution and enabling long distances and unlimited flight time while ensuring the safety of the drone regardless of drone model and size. Houston an open-source API. Houston & Infinity has AI abilities and can predict of traffic loads (drones). It's completely autonomous and cloud based.

SEED | SYSTEM & SOFTWARE

www.highlander.io | info@highlander.io



NFT

NFT Inc. is a US-Israeli startup developing an Urban Air Mobility (UAM) transportation vehicle and system. The NFT door-to-door drive & fly eVTOL drives like a car and lifts off vertically for autonomous flight. NFT also offers a flight autonomy technology package (flight control SDK, Sense & Avoid system, cloud monitoring and control platform) for the NFT eVTOL and all other computer-controlled air vehicles, VTOLs and IoT platforms. NFT is based in Mountain View, CA with R&D in Israel.

SEED | AERIAL VEHICLE
www.nxtft.com | guy.kaplinksky@nxtft.com



OPTIVECTOR

OptiVector's technology answers the critical efficiency and noise shortcomings of VTOL vehicles like drones and flying cars. Based on a multi-patented technology, OptiVector's rotors provide higher flight time, flight range and payload capacity per horsepower, while producing remarkably low noise levels. Regarding propellers for marine vessels, our technology offers major fuel consumption reduction and manoeuvrability enhancement.

SEEDS | AERIAL VEHICLE
www.optivector.com | contact@optivector.com



PZARTECH

Pzartech develops visual recognition technologies that enables user of complex mechanical equipment to quickly identify parts using image processing and deep learning. We aim to enable maintenance operators to receive info regarding the mechanical parts they are working on using cameras from smartphones and tablets.

SEED | SERVICES & APPLICATIONS
www.pzartech.com | jeremie@pzartech.com



SIGHTEC

From today's delivery and inspection drones to the flying passenger taxis of tomorrow, Sightec is opening up our skies to safe, reliable, high-performance air mobility with pioneering computer vision & AI flight technologies. Sightec is introducing NavSight – a Visual situation awareness system that combines innovative real-time video analytics and localization solutions in a stand-alone light-weight product.

SEED | SERVICES & APPLICATIONS
www.sightec.com | elyashiv@sightec.com





URBAN MOBILITY

ACIIST

ACiIST provides, today, an IOT infrastructure for the smart city and roads of tomorrow: Converting existing lighting infrastructure to a smart grid equipped with power and secure broadband connectivity on site, everywhere. This, at as little as 10% of the cost of alternative solutions, fraction of the time and far less public disruption.

SEED | INFRASTRUCTURE
www.aciist.com | sagi@aciist.com



AI INCUBE (PARKNAV)

Ai Incube predicts availability of things for automotive, mobility, telco, smart cities. It's Parknav product predicts parking availability, and has launched in BMW cars (2017), Deutsche Telekom T-Mobile applications (Park & Joy 2018), and others.

ROUND A | PARKING
parknav.com | jeremy@parknav.com



AIPARK (Germany)

AIPARK provides live parking availability maps for developers in mobility. Easy-to-use, highly customizable and available in already more than 500 cities across 15 countries in Europe and North America.

SEED | PARKING
www.aipark.io | info@aipark.io



ASN – INT

ASN-Int – a Smart Parking solution provider. Based on a unique IOT wireless platform, we provide a full platform solution. Developed a real time monitoring wireless platform, to control efficiently, large quantity of IoT sensors. Our solution saves the costly infrastructure required to support sensors, by using our proprietary robust wireless platform, and software applications. ASN Founded the finest technology developers, business developers. ASN solutions are already commercially deployed, world-wide.

ROUND A | PARKING

www.asn-int.com | avishai@asn-int.com



AXILION SMART MOBILITY

Axilion enables cities to reclaim their traffic-congested streets & cut commute time by 40% through advanced AI & deep learning that transforms traffic signals into a dynamic, car connected & adaptive network. With Axilion, cities maximize their current infrastructure via a universal traffic language that bridges multiple hardware networks for unified communication & smart optimization—ultimately paving the way for congestion monetization.

ROUND A | TRAFFIC MANAGEMENT

www.axilion.com | oran@axilion.com



BIKE PLACE

Bike Place is developing the first parking & charging platform for bicycles, e-bike & scooters. Our platform is based on an autonomous robotic technology which enable our customers the most innovative, cost effective & modular solution. By providing fully secure parking & charging facility, we aim to transform urban mobility & increase the daily usage in micro mobility vehicles. Our platform is designated to municipalities, real estate developers & transportation companies.

SEED | MICROMOBILITY

www.bikeplace.co | dudy@bikeplace.co

BIKE PLACE

BLITZ

Enabling the last mile industry to grasp the potential of smart transportation; BLITZ has created an easier, cleaner and more cost-efficient 100% electric two-wheel vehicle. BLITZ supports your smart transport needs with a full-service solution, including a 24/7 customer service centre on hand to support in the operations, insurance, branding & maintenance of your fleet. It is our mission to transform the urban centre, into a smart city.

ROUND A | MICROMOBILITY

www.blitz.co.il | yael@blitzmotors.co.il



BREEZOMETER

BreezoMeter provides location-based, real-time air quality and pollen data to businesses, helping engage consumers, impact daily habits and improve health. Derived from governmental sensors, satellites, weather, transportation dynamics and other sources, BreezoMeter uses innovative technology in machine learning and big data analytics to provide highly accurate, actionable data, including AQI forecast and pollutant concentrations, down to the city block resolution.

ROUND B | GENERAL

www.breezometer.com | itair@breezometer.com



BRINGOZ

Bringoz is a holistic SaaS platform for building & scaling a flexible delivery infrastructure, utilizing internal & external assets. Bringoz Platform solves today's complex logistics challenges with tools to build infrastructure, streamline processes and manage operations. Bringoz Platform serves many verticals including eCommerce, grocery and 3PLs, with emphasis on last mile, synchronizing the needs of the various parties involved to create a balanced and efficient working environment.

SEED | LOGISTICS

www.bringoz.com | neima@bringoz.com



CASESENSE TECHNOLOGIES

AI-Powered Urban Delivery Automation & Optimization.

PRE-SEED | LOGISTICS

www.casesense.net | contact.casesense@gmail.com



CERVELLO

Cervello reshapes rail safety and control by providing proven solutions and services to protect railways against cyber-attacks. Trusted by leading OEMs and delivering a non-intrusive railway-specific technology that supports global standards and protocols, Cervello offers the most complete, accurate, effective and safe cyber-defense solutions for railway signalling systems.

SEED | TRAINS

cervellosec.com | nadav@cervellosec.com



CITIRIDE

Citiride is an 'open platform' for manufacturers of Micromobility products, to run their own rental fleets, direct to consumer.

PRE-SEED | MICROMOBILITY

www.citiride.co | antony@citiride.co



CITY TRANSFORMER

At City Transformer, we develop personal mobility solutions for our ever-growing cities. Looking at the challenges caused by transportation in cities, and its effects on people & the environment – We developed a solution, based on an electric, autonomous ready vehicle, that by a click of a button folds to a motorcycle footprint, Utilizing our patented folding mechanism. The complete concept includes sharing economy and community creation, bringing back the ease of movement inside cities.

ROUND A | MICROMOBILITY

www.citytransformer.com | info@citytransformer.com



CYLUS

Cylus, the global leader in rail cybersecurity, helps urban and mainline companies avoid safety incidents and service disruptions caused by cyber-attacks. Cylus developed CylusOne – the first-to-market solution that meets the unique cybersecurity needs of the rail industry. Led by veterans from the elite technological unit of the IDF Intelligence Corps., and top rail industry executives, Cylus combines deep expertise in cybersecurity & rail.

ROUND A | TRAINS

www.cylus.com | maya@cylus.com



DSRAIDER

The EZRaider combines powerful, go-anywhere mobility in a variety of off-road scenarios, offering operational simplicity, and high reliability and durability – while ensuring the highest level of user safety. EZRaider's line of products offers solutions to a variety of target audiences, such as extreme powersport and ATV fans, farmers, hunters, armed forces, police, firefighters, and security and rescue teams. A whole new way to move!

ESTABLISHED | MICROMOBILITY

www.dsraider.com | simona@dsraider.com



EAZYTRAIN

Passenger train systems worldwide suffer crowding and inefficient loading distribution between train cars and along platforms. This causes lower levels of service and damages to operators. EazyTrain SW senses crowding and loading distribution in train cars and on platforms and guides passengers – enabling better flow, accessibility and improved service. The system's novel technology requires no dedicated hardware installation nor maintenance – making it most suitable for all operators.

SEED | TRAINS

www.eazytrain.com | kobi@eazytrain.com



ECYCLI

Ecycli developed a lightweight portable detachable unit that converts a regular bike into an E-bike, for in-city commuters. E-bikes are subject to theft during parking, thus, commuters avoid using E-bikes on a daily urban journey. The use of Ecycli detachable power unit allows commuters to park their E-bikes anywhere, carry the power unit with them, and avoid theft concern. Target market is Europe, with 7 billion dollars sales of E-bikes in 2018.

ROUND A | MICROMOBILITY

www.ecycli.com | shaul@ecycli.com



EVOWAY

eVo is a hubless, two-wheeled electric vehicle, that is designed to solve the problem of users having to choose between size and safety. The eVo is a unique vehicle, presenting the performance and control of a large vehicle in a small, easy to carry, easy to store vehicle that folds into a trolley. The eVo gives a "surf-like" ride by standing inside the wheels of the vehicle, and using the handlebars for steering, a position that greatly improves safety and control over the vehicle.

PRE-SEED | MICROMOBILITY

naveh@evoway.com



EYEWAY

EyeWay platform turns every traffic zone into a well of information, processing and analyzing it in real-time and providing mandatory solutions. Equipped with a multi-lensed camera facing all directions, preventing traffic accidents, identifying all traffic violations, Adaptive monitoring and routing traffic, Automatic four-way recognition of all the license plates, EyeWay is the ultimate infrastructure for communication with vehicles and many more.

ROUND A | TRAFFIC MANAGEMENT

eyeway.io | nir@eyeway.io



GREENQ

Making garbage trucks smarter: Our platform collects real-time data on the waste pickup process, without any need of manual activation, Hardware is installed solely on the garbage truck and eliminates the need for adding sensors to the bins. We design our advanced technology to meet the needs of municipalities, collection vendors, and system integrators. Why are we here: GreenQ, a young innovative company, has a clear goal of bringing efficient technology to the waste collection industry.

SEED | GENERAL

greenq.gq | info@greenq.co.il



GREENSPOT (United States)

Greenspot works with the public and private sectors to offer networks of publicly accessible EV charging stations in locations with high utilization potential. Greenspot then dedicates a portion of its spots to offer shared electric mobility solutions. The goals are to facilitate EV adoption and reduce the number of cars per household by one. Our business model is unique as it allows for a private entity to make the CapEx for charging station networks.

ROUND A | INFRASTRUCTURE

www.joingreenspot.com | michael@joingreenspot.com



HOPOO

Hoopo is a provider of low-power, wide-area (LPWA) monitoring & tracking solutions. Hoopo's GPS-independent technology enables end-to-end tracking for both outdoor and indoor environments while keeping low ownership costs and extremely high power-efficiency; The unique abilities of hoopoo's geolocation solution allow devices to transmit messages to long ranges (several miles) while allowing batteries that last for years.

ROUND A | LOGISTICS

www.hoopo.tech | info@hoopo.tech



HOPON

A mobile real-time SDK for seamless data-generator on passenger behavior in transit, HopOn is ready to revolutionize the transport industry.

ROUND A | PUBLIC TRANSPORTATION

www.hopon.co | ofer@hopon.co.il



INTELLICON

Intellicon develops a smart traffic signal & information system, based on vehicle to Infrastructure connectivity. System's operation is based on sensing waiting vehicles at the intersection by the Bluetooth & Wi-Fi signals that they emit. This unique technology enables to collect valuable traffic information at an extended range of up to 1000 m'. The collected signals are analyzed through a proprietary method that optimizes traffic signal operation and enables to manage traffic congestion.

PRE-SEED | TRAFFIC MANAGEMENT

www.intellicon.co.il | natan@intellicon.co.il



INTELLIGENT TRAFFIC CONTROL

ITC is adaptive AI based traffic light real time management system. The system using advance Supervised and Unsupervised Machine Learning algorithms to make real time analysis of the intersection situation, then process the data and constantly changing the green light allocation per lane, assuring minimum waiting time at the intersection. the algorithm based on complex mathematical equation which function under every possible scenario with accurate weights on each constrains.

PRE-SEED | TRAFFIC MANAGEMENT

www.itc-israel.co.il | info@itc-israel.co.il



IPGALLERY

IPgallery's Urban Mobility Solutions and Apps leverage real-time AI network Edge and V2X/X2V technologies that help connected cars (driver/driverless) get around cities faster, safer and smarter, reduce congestion, improve fleet management, enable OEM after-market revenues and ultimately provide enhanced personalized multi-modal mobility and shared ride user experiences. Our ecosystem partners include Telcos, Cities, Car OEMs and Tier-1 vendors.

ROUND B | GENERAL

www.ipgallery.com | info@ipgallery.com



KEYPODON

KeyPod IoT platform help manage distributed assets. In less than one working day we can set up and deploy a fully customized solution to improve your team and client's safety, security, workflow, communication, and equipment maintenance.

SEED | GENERAL

www.keypodon.com | info@keypodon.com



METROBOARD

Manufacturer of high-end electric skateboards for both transport and fun!

ESTABLISHED | MICROMOBILITY

metro-board.com | info@metroboard.com



MOOVIT

Moovit is a leading Mobility as a Service (MaaS) provider and the world's #1 urban mobility app. Moovit simplifies urban mobility all around the world. Moovit's free app is in use in more than 2,700 cities in 86 countries and 44 languages. Moovit is an early pioneer of Mobility as a Service (MaaS), helping them improve urban mobility. Moovit owns and operates the world's largest repository of transit data, amassing four billion anonymous data points a day.

ROUND C | PUBLIC TRANSPORT

maas.moovit.com | sales_leads@moovit.com



MYCELIUM

Mycelium is an enabler for distribution/transportation companies and retailers to become smart and make science driven decisions. We empower their business with new capabilities and allow them to create new business and pricing models and providing needed income for firms with underutilized assets. Mycelium's solution is deployed in Israel's market leaders and already proven savings in transportation operational costs by up to 30%.

SEED | LOGISTICS

mycelium.ai | ofirprimer@gmail.com

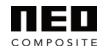


NEO COMPOSITE

Neo Composite develops and produces cutting-edge, innovative composite materials, products and custom-engineered turnkey solutions for smart, eco-friendly and economical cargo mobility by land or sea. Example projects: lightweight cargo-box kit, E-trucks, cargo-telemetrics, tanker-barges & more.

ROUND A | LOGISTICS

www.neocomposite.com | rudi.lokits@gmail.com



NOTRAFFIC

NoTraffic is a turnkey traffic management platform solving today's traffic challenges while preparing roads for the connected era. Cities define policies like transit priority or bike & pedestrian safety using the cloud dashboard. AI software intelligently implements these policies at each traffic signal in real-time to autonomously manage an entire city grid based on actual demand, customizing service for every type of user to cut congestion, reduce emissions and prevent accidents.

ROUND A | TRAFFIC MANAGEMENT

www.notraffic.tech | reut@notraffic.tech



OPTIBUS

Optibus helps the world's leading transit providers better run mass-transportation through advanced artificial intelligence and optimization algorithms. The Optibus technology is used in more than 300 cities around the world including Tel Aviv, London, Las Vegas and more.

ROUND B | PUBLIC TRANSPORTATION

www.optibus.com | shirm@optibus.com



PARKAM

ParkKam developed a unique vision-based software solution for the smart mobility and parking industry, supporting all types of pre-existing cameras and applicable worldwide. ParkKam processes live image streams from connected on-street and off-street cameras to collect parking and traffic flow insights and probabilities, identify parking vacancy, provide in-app navigation, recommend dynamic parking pricing and even identify parking violators, all in real time and with unprecedented accuracy.

ROUND A | PARKING

www.parkam.com | office@parkam-ip.com



PAXXI ROAD

Paxxi Road - a platform for managing road services towing and car transport. Early in 2017 Paxxi Road was established to provide with its customers a unified platform for the management of companies for road services, towing and car transportation, with advanced technology, for the transfer of real-time data in a dynamic environment, and for the creation of automation and optimization on an economic/service basis, in operating the self-operation system of the companies and subcontractors.

ROUND A | GENERAL

benor.management@gmail.com



QUAY

Quay solves the challenges of First and Last Mile in a very flexible way. Instead of using the hub and spoke model like traditional shipping services, Quay's disruptive innovation is bringing the concept of the Internet - the "Mesh Network" - to the domain of delivery services. Quay enables parcel delivery in the city within a few hours for only \$2 and intends to be the first company that will bring the "Physical Internet" from the academy to the real world.

SEED | LOGISTICS

www.linkedin.com/company/quay | yoav@quay.express



RADGREEN

Environmental data solution, monitoring air quality, noise, and radiation to indicate action in well buildings and Smarter Cities, indoor and outdoor. Promoting public health and wellness.

SEED | GENERAL

www.radgreen.com | info@radgreen.co.il



RAIL VISION

Rail Vision is a leading provider of cutting-edge cognitive vision sensor technology and safety systems for the railway industry. The company's suite of innovative solutions rapidly identifies infrastructure failure and collision potential to reduce accidents, injuries and damages while improving maintenance and increasing uptime.

ROUND B | TRAINS

www.railvision.io | nisso@railvision.io



RIDEAIR INNOVATION

We at RideAir Innovations have set a goal to simplify the life of bicycle riders around the world. Our mission is to create the perfect solution for all bikers out there... including ourselves! Now, we can all stop wasting our time and energy on basic bicycle maintenance and begin a new riding experience.

PRE-SEED | MICROMOBILITY

www.ride-air.com | nir@ride-air.com



ROAD CODE ENGINEERING

AsphaltPro for Roads, Bridges, and Runways is combining the latest advances in material science and nanotechnology with an automated all-weather robotic system, which utilizes machine learning algorithms and 3D vision. The technology is 2 to 20 times faster than conventional methods—permanently fixing a pothole in 5 minutes. Built to last from -22°F to +186.8°F / -30°C to +86°C, fully operational in extreme weather. Provides a permanent repair that outlasts the road. Proved in field trials.

SEED | INFRASTRUCTURE

www.roadcode.co.il | ryogev@roadcode.co.il



ROADS.AI (PREVIOUSLY 1.21GW)

We materialize the notion that in order to integrate automated driving systems, achieve optimal driving decisions and for better overall network performance, the infrastructure should be playing significant role in the driving decision process for the vehicles in the system. Our technology will add a digital layer to the infrastructure and allow it to take the perspective of an intelligent external observer, who understands the unfolding situation and instructs the vehicles on the road.

PRE-SEED | INFRASTRUCTURE

www.121gw.tech | ronidulberg@121gw.tech



ROADSENSE

RoadSense is an End to End solution enabling to convert roads to “smart roads” overnight! Our sensors are very easy to deploy, without the need to break the asphalt. with SAFETY FIRST approach we are creating a very understandable environment to drive in, and a supportive surrounding to all vehicles through V2I protocols. our main goals are to deliver quality data to the road owner, help reduce car accidents and fatalities, and support future vehicles of all types.

PRE-SEED | INFRASTRUCTURE

roadsense.tech | baruch@roadsense.tech



ROUTEVALET

Mixed-modal travel. Drive to a park and ride, hop on a train and then scooter to your final destination. All in one app. RouteValet. Live in Tel Aviv, Jerusalem, New York, Tokyo and Osaka.

SEED | MAPPING & NAVIGATION

www.routevalet.com | motti.sigel@routevalet.com



S.R.I – THE SPIRAL RING INTERCHANGE

When commuting – a car may be the best way to leave home, but it is the worst way to enter city center. We solve congestion and parking search issues, by redesigning interchanges and parking lots: The Spiral Ring Interchange (S.R.I) and the Complete Park & Ride System (C.P.R.S) located at the outskirts of the smart city, would stop cars at the highway interchange, and transfer commuters to a train or bus instead. This means less traffic jams, less urban congestion and no parking search.

PRE-SEED | INFRASTRUCTURE

www.spiral-ring-interchange.com

yarontoren@spiral-ring-interchange.com



SAFER PLACE

Safer Place delivers a single unified video-based technology platform which detects, records and documents all types of high-risk traffic & parking violations minimizing fatal accidents. The platform is field proven & operational. We provide an end-to-end solution from ticketing, through collection and legal cases in court. Our products are already fully deployed in EMEA, generated 2 million tickets worth \$150M income for our customers allowing flexible platform-as-a-service business model.

ROUND A | PUBLIC TRANSPORTATION

www.saferplace.com | hila.kareev@saferplace.com



SAVE A TRAIN

Save A Train mission is to digitize Rail, we have developed a series of products including Train ticketing technology, pricing AI algorithm and Big data on travelers patterns and behaviors, and recently started collaborating with airlines and OTAs on multi-modality Interlining of Air+Rail routes.

ROUND A | TRAINS

www.saveatrain.com | udi@saveatrain.com



SCOOT AIR

Scoot Air ISRAEL is a Scooter manufacturer formed in 2014, specialising in developing and making low weight compact electrical scooters. Scoot Air is the lightest electric scooter in the world in the 10inch wheels category. Weight Ranges between 12-14 kg. Scootair has a unique folding patent that is one of a kind using the helm to fold the scooter. Scoot Air's riding experience is stable easy to handle and safer to ride.

ESTABLISHED | MICROMOBILITY

www.scootair.co.il | sscootair@gmail.com



SKYTRAN

skyTran is the first mass transport system with the capacity, cost, and convenience to solve traffic. With sleek autonomous vehicles, skyTran moves people from A to B faster than any other form of transport. skyTran's infrastructure leverages existing rights of way not available to other transit systems and allows it to be deployed rapidly within a city. We have established full-scale test facilities and expect to break ground on our first commercial project in early 2020.

ROUND B | PUBLIC TRANSPORTATION

skytran.com | skytranisraeltd@gmail.com



SMART CAR

Smart Car LTD. (SCL) emerged from a defense systems corporation that developed defense products for Unmanned Vehicles and C4I (Command, Control, Communications, Computing and Intelligence) systems. Smart Car offers a real-time Congestions Management Platform enabling the implementation of usage-based mobility policies (UBMP) for congestions management, providing motorists either incentives and or tolling for congestion reduction and traffic management.

ROUND A | TRAFFIC MANAGEMENT

www.smartcarcorp.com | nigal@smartcarcorp.com



SMART WAYS

Smart Ways develops smart and dynamic algorithm for managing networks junctions according to real time traffic. Our algorithm is based on simulation, AI, video systems analysis & advanced V2X systems that include feedback from drivers. We can successfully reduce traffic Jams up to 50% with our technology, lately we prove our technology by simulation during a pilot with the Jerusalem Municipality.

SEED | TRAFFIC MANAGEMENT

baruch.hirsh123@gmail.com



SPARK PARKING TECHNOLOGIES

For the past several years, we are focused on developing a technology to solve the parking problem in large cities. The technology developed to address the problems of the driver in his search for parking and the barriers facing all those engaged in finding such a solution. Our unique approach to the problem led us to develop a smart and pragmatic service for the driver which we offer via different products to all parking stakeholders. let us get your parking done.

ROUND A | PARKING

www.parking-polly.com | zohar@sparking.co.il



SPARTANS AI

Spartans is a leading innovation agency headquartered in Tel Aviv. We focus on the utilization of emerging technologies to create valuable solutions for companies around the world. Using artificial intelligence, augmented reality and virtual reality, we develop top-notch digital products that provide companies with a competitive advantage. We also create our own innovative products that become independent tech companies.

PRE-SEED | GENERAL

www.spartans.tech | lior@spartans.tech



SPATIAL LOGIC

For companies where pin point positioning is key, Spatial Logic's AI powered visual positioning system (VPS) provides accurate positioning, in any environment and across any platform. Spatial Logic's VPS powers solutions for ride hail & ride share pick up, drop off and routing as well as next generation navigation experiences such as augmented reality-based navigation.

SEED | MAPPING AND NAVIGATION

www.splogic.ai | info@splogic.ai



STEP-HEAR

Starting in 2018, Step-Hear is running a pilot project for an accessible public transportation system in Israel involving 70 buses and 170 bus stops. Step-Hear envisions that it will eventually offer an accessible "Waze for disabilities." Waze is a GPS navigation software that works on smartphones and tablets with GPS support. It includes all accessible and inaccessible places and preferred access routes for people with various disabilities, including visual and intellectual.

ESTABLISHED | PUBLIC TRANSPORTATION

www.step-hear.com | yishai@step-hear.com



STREETWIZE SIMULATIONS

StreetWize VR is changing the way we teach our children road safety in schools and at home. Our training scenarios have been validated by a research study that was peer reviewed at the IsraHCI conference. We have initial traction with over 150 schools in Israel that have participated in our program following recommendation from the Israeli education ministry and with funding from the Israeli authority for road safety.

PRE-SEED | GENERAL

www.streetwizevr.com | info@streetwizevr.com



TEPORTO

One-click smart platform for transportation companies that seamlessly adapts commuter service to commuters' needs. Increasing the service area while keeping a high level of quality and making the commuter service more flexible while keeping it sustainable and affordable. Treporto's AI platform for smart shuttles, enables a faster feedback loop, better fitting routes and schedules to commuters' needs, raising users' satisfaction and ridership.

SEED | PUBLIC TRANSPORTATION

www.teporto.com | info@teporto.com



TLT BOARD

Off Road Motorized Skateboard.

ROUND B | MICROMOBILITY

www.tltboard.com | a.eyal@outlook.com



TRAILZE

Trailze RideAI helps Micromobility operators increase utilisation, reduce costs and improve rider's satisfaction.

PRE-SEED | MICROMOBILITY

www.trailze.com | info@trailze.com



TUGGER

Tugger is a B2B Travel-Tech company that protects your customers from city towing – towing in the event your customer has forbidden parking space and their car was towed. Our white-labelled City Towing Insurance (CTI) product helps auto insurance, car rental, and roadside assistance companies take better care of their customers. With CTI, your customers get real-time help finding their cars, and reimbursed for towing fees.

PRE-SEED | GENERAL

www.tugger.info | assaf@tugger.info



VALERANN

Valerann has developed The Smart Road System: a wireless, sensory, IoT system that provides real-time, high resolution information about everything that takes place on the road. This information is used to detect risks, prevent accidents, optimize intersections, automate traffic control centres, and support connected & autonomous vehicles. The Valerann system transforms the road into a stable base for a complete, smart transportation eco-system.

SEED | INFRASTRUCTURE

www.valerann.com | daniel.yakovich@valerann.com



VIISIGHTS

Viisights is a leading provider of behavioural understanding systems for real-time video intelligence that leverage unique artificial intelligence technology. The company provides behavioural understanding systems for safe and smart cities, smart enterprises, critical infrastructures, transportation hubs and shared mobility initiatives. Viisights is committed to developing artificial intelligence technologies that facilitate human-like video understanding.

ROUND A | TRAFFIC MANAGEMENT

www.viisights.com | maya@viisights.com



WAYCARE

Waycare optimizes city traffic management by harnessing vast amounts of in-vehicle data and legacy systems for predictive insights. Leveraging machine learning and AI, Waycare synthesizes all data sets and provides actionable real-time insights and forward-looking alerts to identify near-term dangerous roads.

SEED | TRAFFIC MANAGEMENT

waycaretech.com | paul.zamsky@waycaretech.com



WAZE

Waze is all about contributing to the 'common good' out there on the road. By connecting drivers to one another, we help people create local driving communities that work together to improve the quality of everyone's daily driving. That might mean helping them avoid the frustration of sitting in traffic, cluing them in to a police trap or shaving five minutes off of their regular commute by showing them new routes they never even knew about.

ESTABLISHED | MAPPING & NAVIGATION

www.waze.com



ZEHPOH

ZehPoh is a unique application that enables drivers to easily find a promised free on-street parking space. With ZehPoh Parking becomes a pleasure. It needs low investment and not need maintenance.

SEED | PARKING

www.reachme-app.com/ZehPoh | ideasa@gmail.com



ZENCITY

Zencity uses AI and big data to reinvent the way local governments make decisions. With minimal integration, we gather and analyze millions of data points from online and offline resident interactions. Then we distil reliable, actionable insights from the data to help local governments better prioritize resources, track performance, and connect with their communities.

ROUND A | GENERAL
zencity.io | ran@zencity.io



PARTNERS SUPPORTING
ECOMOTION WEEK 2019



PLATINUM



GOLD



SILVER



BRONZE

GENERAL MOTORS

At General Motors, we envision a future of **zero** crashes, **zero** emissions and **zero** congestion, and are committed to lead the way toward this future, through technological and business innovation: Electrification, Autonomy, Connectivity and Shared Mobility.

General Motors (GM) has been pushing the limits of transportation and technology for over 100 years. Today, we are in the midst of a transportation revolution, and we have the ambition, the talent and the technology to realize the safer, better and more sustainable world we want.

Headquartered in Detroit, Michigan, GM employs ~180,000 people worldwide and holds 9% of the global Automotive Market (>11% without Europe), serving 6 continents, across 23 time zones.

GM's global turnover in 2018 reached > 8.4 million vehicles, with a revenue of USD 147 billion.

As the first automotive company to mass-produce an affordable electric car, and the first to develop an electric starter and air bags, GM has always pushed the limits of engineering. Today, GM is the only company with a **fully integrated solution to produce self-driving vehicles at scale**. We are committed to an all-electric future. 2.6 billion EV miles have been driven by drivers of five GM electrified models, including the Chevrolet Bolt EV.

Our future depends on responsible stewardship of the earth, and we continually seek creative and innovative solutions for the environment. Our policies and technologies promote a cleaner planet from supply chain to manufacturing to the vehicles we put on the road.

Our vehicle manufacturing process today has the lowest environmental footprint in our history.

GM is an equal opportunity employer and views diversity as a key factor for success. Led by a female CEO, female CFO and female VP Innovation, GM was named the world's top company for gender equality by gender equity data and insight group Equileap. Our culture is based on respect, integrity, accountability and equality. Our team brings a wide-range of perspectives and experiences to solving the complex transportation

challenges of today and tomorrow.

General Motors Israel

The Israeli GM Technological Centre was established in 2008 and employs >350 Scientists, Developers & Engineers tackling the most complex technological challenges in the field of Autonomous and Connected vehicles.

Our R&D and Engineering groups focus on a wide range of technologies including: The development of smart sensors for ADAS and Autonomous driving; Vehicle connectivity (V2X communication); Vehicle controls; Human-machine interaction; Natural language understanding & advanced acoustic systems; Cyber security, Advanced infotainment systems; Deep learning algorithms for perception and behavioural planning, supporting high levels of automated driving; Personal-mobility-applications including: OnStar (Global Service Platform), user applications for Electrical Vehicles (route planning, virtual charging network) and fleet management applications. The center has a large AI group, employing machine learning experts which implement the latest research in Deep Learning and Reinforcement learning to develop self-driving technology which is **safe, effective and affordable**.

We offer a challenging work environment in one of the most dynamic industries today. Our engineers have a unique opportunity to work on features and applications which will be incorporated in the company's future vehicles and seen on the roads within the next few years.

We are General Motors. We transformed how the world moved through the last century and we're determined to do it again as we redefine the **future of mobility**.

We invite you to follow us and join our ride!

Facebook page: www.facebook.com/GeneralMotorsIsrael/

Website: [Careers.GM.com](https://careers.gm.com) | Email: TA.Israel@GM.com



Suppliers and automakers are pushing the pace of technology like never before. In the last five years, thousands of disruptive companies have brought forward new technologies that could apply to the automotive industry. Millions of students are learning about robotics, user experience design, machine learning, computer science and dozens of other fields that will impact mobility.

With brilliant and disruptive thinking everywhere, the question isn't about when driverless cars are coming or when all vehicles will be fully electric. The question is about who is ready for these transformative shifts.

As a mobility technology company and leading supplier in the automotive industry, Magna continues to deliver on what's needed today while creating innovations that society doesn't even know they need yet. And more important, we are solving problems that haven't yet surfaced. We know how to auto-qualify technology from other industries, and we are constantly improving our own processes and products, keeping us ahead of the curve.

It makes you realize that with all this talent and expertise, answers are everywhere. It's up to us to define the right questions. We cultivate innovation — in our company, in our industry, and beyond. We turn disruptive thinking into disruptive technology. Then we bring it to market.

Our more than 169,000 entrepreneurial-minded employees — combined with our ability to rapidly auto-qualify and commercialize technology — uniquely position us to accelerate developments in far less time.

And knowing that great ideas come from a wide variety of sources, we actively work with universities, entrepreneurs and startups around the world to help bring their innovations to market.

Magna International is proud to sponsor EcoMotion and continue our outreach and engagement with tech companies and start-ups worldwide. Magna makes the impossible possible by solving some of the automotive industry's most complex problems. Our agility, complete systems expertise, global reach and disruptive thinking allow us to bring the best technology to market and lead the industry into the future.

For Magna, the vehicle doesn't just have technology, the vehicle is technology.

Welcome to Mobility.

Yandex

A groundbreaking automotive project to make driving safer than it's ever been.

Yandex is a technology company that builds intelligent products and services powered by machine learning. In addition to being one of the world's most popular search engines, the company offers market-leading on-demand transportation services, navigation products, and other mobile applications for millions of consumers across the globe. Yandex has been listed on the NASDAQ since 2011.

An autonomous vehicle is a safe vehicle. It requires no human driver — you are transported to your destination by a system that never gets tired, distracted, or upset. It's aware of its surroundings more than 200 meters away in 360 degrees and detects details that even the most experienced human drivers will miss.

Yandex autonomous vehicle technology knows where it is located, perceives its environment, predicts how others will be moving through it, and plans its own movements accordingly. The technology can be applied to any existing vehicle, making travel safer and more accessible to all.

HOW YANDEX DRIVERLESS CARS SEE THE WORLD

- Cameras point in every direction from the car, acquiring visual information about traffic signs, other vehicles, etc. This helps the car form a better overall picture of its surroundings than a human ever could.
- LIDARs emit laser beams while rotating 360 degrees, producing a highly accurate 3D model of the environment.
- Radars monitor car surroundings, measuring the proximity of other objects and their speed.
- GNSS receivers process positional signals from GLONASS and GPS. Combining it with LIDARs, cameras, and IMUs, the car continuously tracks its location with centimeter-level precision.

- The car's internal software fuses the data from all the sensors and applies state-of-the-art AI methods to get a passenger from point A to B safely, conveniently, and most efficiently.

Yandex's self-driving team started working on this technology in 2016. Building on the company's expertise in machine learning, navigation, mapping, and cloud technologies, it presented a first prototype May, 2017. Since then, it rapidly advanced to driving on public roads. In 2018 Yandex became the first company in Europe to offer a fully autonomous ride-hailing service by launching the service in the tech-focused cities of Innopolis and Skolkovo. In 2019 Yandex was the only company that demoed autonomous driving with no one behind the steering wheel to the visitors of CES in Las-Vegas.

The company constantly expands the range of testing conditions to guarantee robust and scalable technology applicable worldwide. In 2019 Israel joined Russia and the US as the third country where Yandex conducts its public-road tests on a regular basis.

Yandex SDC continues to establish itself as a global IT company attracting top talent around the globe. To this end, it opened an R&D center in Tel-Aviv with the goal to hire some of the brightest minds of the start-up nation. The team looks forward to more innovation and collaboration with the local talent.

Company also opened a Tel Aviv branch of the Yandex School of Data Analysis to offer a one-year career advancement program in machine learning. Self-driving car is featured as a learning tool at Y-Data School as an amazing example of the company's achievements in AI and IT.

Visit our booth at the entrance to EcoMotion to learn more about the technology, business, and career opportunities. Or drop us a letter:

Business inquiries: bd-sdc@yandex-team.com

Media relations: pr-sdc@yandex-team.com

For job openings: hr-sdc@yandex-team.com



From global automakers and Tier I automotive suppliers to the latest mobility startup, Amazon Web Services (AWS) is helping automotive companies to build innovative connected products and services for every touchpoint of the customer journey. Our secure, agile and scalable platform can help accelerate your pace of innovation, improve your security posture and lower your IT cost structure.

With AWS you can focus your resources on building differentiated automotive brand experiences for your customers, rather than managing IT infrastructure.

Connected Vehicles and Mobility

AWS offers a comprehensive set of services to gather, process, analyze and act on vehicle data at global scale with local computing capabilities allowing you to execute functions and act on data within the vehicle, even when connectivity is interrupted. Rapidly develop and deploy innovative connected vehicle applications to provide personalized, intuitive, intelligent and safe interactions for an advanced in-vehicle experience while reducing connectivity costs.

Digital Customer Engagement

AWS' suite of cloud services provides advanced digital marketing tools and highly scalable infrastructure allowing you to modernize your marketing platforms and provide a personalized, engaging automotive experience at every touchpoint. Provide smart on-demand content, develop intelligent AI conversational agents, and use machine learning to predict customer behavior and provide insights that drive business results.

ADAS & Autonomous Vehicles

AWS provides a full suite of services to support Advanced Driver Assistance Systems and Autonomous Vehicle development and deployment with nearly unlimited storage and compute capacity, support for popular deep learning frameworks to accelerate your algorithm training and testing and edge computing with machine learning inference capabilities for real-time processing of local rules and events in the vehicle.



Since March 2017 a government owned company with redefined roles – practically a new company with the objectives of: Promoting smart transportation by managing, initiating, developing innovative technological solutions to be integrated in transportation infrastructures. Promoting public transportation, with an emphasis on demand management, connectivity and sustainability in the metropolitan areas. Initiation, planning, construction, maintenance and management of transportation infrastructures in the metropolitan areas. Operate & manage a Master Plan team for metropolitan transportation, promoting long-term planning for immediate implementation. Traffic management in the urban and metropolitan areas. Serve as an implementation arm of the MOT to initiate & carry out activities promoting the transportation in Israel.

Major projects:

Urban Express – a Public Transport Lanes network connecting city centers in the Dan metropolis. Tripling the number of Lanes in 17 Local authorities in the metropolis | **Fast Lanes** – 110km of fast lanes, enabling preference for public & mass transport, along the Ayalon HW from Rishon Lezion to Netanya & Route 5 to Rosh Ha'ayin with massive parking lots. Public & mass transport will be free of charge & private vehicles allowed for a fee when there is no load | **Dan Bike** – a metropolitan interurban bicycle, wide & separated with shading, refreshments road network, establishing a daily inter-city cycling commuters' system | **Alternativ** – an incentive project deriving 100,000 drivers to travel to work in the metropolitan center by public transportation or not in peak hours, by receive money from the state | **The Test Center** – a test center in Israel for innovative transportation technologies. Based on company's ability to speak both the start-ups & regulator languages, enabling Israeli companies to conduct their tests locally.



With a workforce of some 30,000 automotive professionals across the Americas, Europe, and Asia, HARMAN designs and engineers connected products and solutions for automakers, consumers, and enterprises worldwide. HARMAN's cutting-edge products include digital cockpit systems, Remote Vehicle Updating over-the-air (OTA) solution, audio products, SHIELD Cybersecurity Solution and IoT services. In March 2017, HARMAN became a wholly owned subsidiary of Samsung Electronics Ltd.

Audiophiles from every generation call on HARMAN to deliver the best in sound in the studio, on the stage, in the car, at home and on the go. HARMAN's portfolio of legendary brands includes AKG®, Harman Kardon®, Infinity®, JBL®, Lexicon®, Mark Levinson® and Revel®.

Since 2012, HARMAN has made significant and ongoing investments in Israeli technology, including the acquisitions of iOnRoad, Redbend and TowerSec. HARMAN Automotive Cybersecurity is a full service global business unit that has deep experience in traditional IT security and embedded security, as well as pioneering work in automotive cyber security. HARMAN's Remote Vehicle Updating Service is the de facto standard for OTA in automotive. The solution enables efficient full-vehicle management, already chosen by 24 OEMs to enable secure OTA software updates to more than 30 million vehicles. HARMAN's portfolio around Augmented Reality is based on iOnRoad's technology, with the first system deployed as part of Daimler's MBUX in 2018.

HARMAN has been an active member of industry institutions – such as Auto-ISAC, SAE/ISO, Jaspar and others – working to enhance cybersecurity awareness, design and deployment across the global automotive industry.

In October 2018, HARMAN unveiled their new facility in Hod Hasharon, Israel. It hosts a smart-car lab, where teams can research, test and validate the company's cybersecurity, software and automotive cloud solutions in real-life conditions.

Honda Xcelerator®

In 1946, Soichiro Honda developed the concept of using surplus generator engines, originally meant to power wireless radios, as auxiliary power for bicycles. Modifying 500 or so bicycles, Honda, then a startup of sorts, produced and sold bicycles equipped with these auxiliary engines. For decades Honda continued to exceed expectations and requirements – beginning with motorcycles in 1946 and foraying into automobile production for the first time in 1963. In 1981, Honda developed the world's first car navigation system, the Honda Electro Gyroator that displayed the current location on a map. In 2000, Honda developed a revolutionary lightweight humanoid robot. In 2002, we released the first US government certified fuel cell vehicle and, we took Honda mobility to the skies after developing an original aircraft and jet engines and bringing them to customers in 2015.

Through proactive and future-facing R&D efforts, Honda continues to provide the freedom of mobility to everyone. From jets to power products and from motorcycles to automobiles, Honda sold more than 31 million units globally during the last fiscal year. Through it all, our goal never changed: create a safer, smarter world in which people experience the joy of mobility. That's why in 2015, Honda launched the Honda Xcelerator program. Headquartered in Silicon Valley with satellites in Detroit, Boston, Canada, Europe, Israel, China, and Japan, Honda Xcelerator is an open innovation program for innovators across all funding stages who seek to collaborate with Honda and create transformative new technologies and businesses. Honda created the program to engage innovators in an open and supportive environment. By engaging more deeply with the local startup community, startup liaisons create win-win opportunities for collaborations between top innovators and Honda.

Honda Xcelerator offers funding for rapid prototyping, collaborative workspaces, and pairing with Honda mentors.

To learn more, visit xcelerator.hondainnovations.com.



RENAULT NISSAN MITSUBISHI

Groupe Renault, Nissan Motor Company and Mitsubishi Motors represent the world's largest automotive alliance with 10.76 million vehicles sold in nearly 200 countries in 2018. It is the longest-lasting and most productive cross-cultural partnership in the auto industry. This strategic alliance is the industry leader in zero-emission vehicles and is developing the latest advanced technologies, with plans to offer autonomous drive, connectivity features and services on a wide range of affordable vehicles. Alliance's innovation strategy is focused on reshaping the way we power, drive, and connect our vehicles. Under the Alliance 2022 Strategic Plan, Renault-Nissan-Mitsubishi will launch 12 pure electric models, utilizing common EV platforms and components, while also bringing to market 40 vehicles with autonomous drive technology and developing robo-vehicle ride-hailing services.

The Alliance Innovation Lab Tel Aviv aims to advance the state-of-the-art mobility, with a main focus on vision sensors, cybersecurity, big data and electric vehicles. Its mission is to identify and test Israeli technologies that could be implemented in future cars and services offered by the Alliance member companies. The Lab collaborates with the local innovation ecosystem through joint prototyping efforts. Since February 2018, it has operated under the new Technological Labs program of the Israeli Innovation Authority. The Lab is a leading partner of CityZone, Tel Aviv's smart city environment and experiment zone in Atidim Park, where its facility is located.

The Alliance Innovation Lab Tel Aviv works in close cooperation with Alliance Ventures, a venture capital fund which will invest up to \$1 billion over five years. The fund, launched in 2018, operates globally, including in Israel and has already committed to invest in Maniv Mobility. The fund targets technology and business model innovation. By drawing on expertise and business opportunities of the Alliance, it pursues strategic investments at all maturity stages.

Rosenberger

Rosenberger Hochfrequenztechnik GmbH & Co. KG, founded in 1958, is a family owned company and ranks today among the world-wide leading manufacturers of standard and customer-specific connectivity solutions in high frequency, high voltage and fiber optic technology.

For automotive electronics Rosenberger develops and manufactures connectivity systems for a variety of applications, e.g. driver assistance systems, autonomous driving, navigation and telematics, infotainment, fond entertainment, internet and mobile communication or battery charging and power transmission in electric and hybrid vehicles.

The product range also covers RF coaxial products, fiber optic products and cable assemblies for applications in telecommunication, data systems, medical electronics, industrial test & measurement electronics or aerospace engineering.

Rosenberger is certified to IATF 16949:2016, DIN EN 9100, ISO 9001 und ISO 14001.

The headquarters of Rosenberger is located in Fridolfing (Oberbayern, Germany) where today approx. 2,200 people are employed. Worldwide, the Rosenberger group operates manufacturing and assembly locations and sales offices in Europe, Asia and North and South America where – in total – approx. 11,000 employees develop, produce and sell our products.

SOFTWHEEL

SoftWheel designs, engineers and manufactures advanced electric vehicle platforms making the future of electric mobility more efficient, reliable and scalable. Backed by global leading automakers, SoftWheel's technology is in the process of becoming the standard for EVs.

At SoftWheel, we developed a technology that enables a completely flat and modular chassis and for that we had to reinvent the wheel. Our disruptive technology allows for the integration of the electric motors, steering, suspension, drivetrain, sensing, brakes, electronics, cooling and gears into the wheel area of the car. This revolutionary approach frees space, reduces the vehicle weight and enables a full freedom of design by creating a complete skateboard chassis. This unique architecture reduces up to 67% of the space and up to 33% of the weight of a similar conventional vehicle, enabling the highest \$\$ return per ride.

SoftWheel's technology plays a fundamental role in recent global platform consolidation trends where one chassis is designed to fit multiple vehicle applications and serves multiple automakers and mobility providers, thus dramatically reduces the development and engineering costs of new chassis platforms. With our complete flat skateboard chassis, the body design is fully flexible and allows multiple body configurations on a single platform from passenger to cargo while allowing for a significantly smaller footprint without compromising on performance, range or comfort. SoftWheel's solution is ready for the future of autonomous drive with the seamless integration of our novel preventative maintenance technology responsible for minimal downtime and undistruptive service.

With the support of our partners, the world's leading Tier1s and automakers, SoftWheel ensures the delivery of cutting-edge technology, at automotive grade, in large scale and with global presence.



SOMPO Digital Lab
Tel Aviv

The rise of new mobility services like ridesharing and autonomous cars are forcing the traditional insurance industry to adjust its way of thinking and current business models. Insurance underwriting and claims management will evolve to serve the evolving mobility market.

As a leading insurance company and one of the largest providers of nursing care services in Japan, SOMPO has been on a journey of exploring innovation that will keep up with the present and future challenges of its customers.

Sompo holds a 30% market share of the P&C business, of which 70% of the revenues are generated by auto insurance.

Sompo Digital Lab Tel Aviv is one of three worldwide innovation centers, which aims to serve as a local operational branch of the company's digital division and to expand a wider range of services for security, health, and wellbeing.

With digital labs already operating in Tokyo and Silicon Valley, Sompo's lab in Tel Aviv supports Sompo and its clients with Israeli cutting-edge technologies in the fields of Insurtech, Mobility, Cyber Security, Digital Health, Industry 4.0, Blockchain, Smart Cities and more.

• APTIV •

Aptiv is a global technology leader, with more than 160,000 people across more than 125 manufacturing facilities and 15 major technical centers worldwide. With a presence in 44 countries, we address mobility's toughest challenges through our deep software and systems integration expertise, delivering market-relevant solutions for our customers.

Aptiv brings unparalleled capabilities in solving our customers' complex challenges. We are unique in that we can integrate whole systems through Smart Vehicle Architecture™ — operating as the brain and nervous system of the vehicle — enabling electrification, active safety, and connectivity.

Our mission is to make the world safer, greener and more connected than ever before. As these trends converge and the world of mobility changes, we will lead this change.

Mobility has the power to change the world, and we have the power to change mobility.



Arbe is leading a radar revolution that will make autonomous driving safe and affordable, jumpstarting the transition to a fully autonomous vehicle landscape.

Developing a radar 100 times more detailed than any other system in the market, Arbe is the world's first company to demonstrate ultra-high-resolution imaging radar with post-processing and SLAM. Arbe technology empowers the next generation of safety features, and vehicle autonomy based on a proprietary chipset. The radar system offers superior performance at a low cost, size, and weight.

Founded in 2015, Arbe is headquartered in Tel Aviv, Israel, and has business development and customer service locations in the United States and China.



Aurora Labs is pioneering Self-Healing Software for connected cars to enable OEMs to proactively respond to future vehicle software architectures, processes, and services. Aurora Labs' Line-Of-Code Maintenance™ technology is the foundation of its In-Vehicle Software Management solution. Using machine learning algorithms to uniquely address all four stages – detect, fix, update and validate – of a software management solution, Aurora Labs future-proofs the next generation of software-driven automotive features. From detecting line-of-code faults to predict downtime events, fixing errors on-the-go to provide a safety-net for new software rollouts, enabling reliable and cost-effective rollouts of new automotive features to all ECUs in the vehicle without any downtime for the user and validating changes to the software to facilitate homologation, Aurora Labs is paving the way for the age of the self-healing car.



Bosch Group is a leading global supplier of technology and services. Having 410,000 associates worldwide it sold 78 billion euros in 2018. Bosch operate in four business sectors: Automotive Mobility Solutions, Industrial Technology, Consumer Goods, and Energy and Building Technology. As an IoT leader, Bosch offers innovative solutions for smart homes and cities, connected mobility and industry, using its expertise in sensors, software, services, and its own IoT cloud, to offer connected, cross-domain solutions.

Bosch solutions for connected life improves quality of life with innovative products and services, sparking enthusiasm with its "Invented for life" technology. Robert Bosch GmbH and its 440 subsidiaries in 60 countries covers nearly the entire world. The company's innovative strength is the basis for its future growth, relying on 69,500 associates in R&D, at 125 locations across the globe.



BP Ventures was set up more than 10 years ago to identify and invest in private, high growth, game-changing technology companies, accelerating innovation across the entire energy spectrum. Since then, BP has invested over \$500 million in technology companies across more than 50 entities.

With more than 300 co-investors, Venturing plays a key role in BP's strategy to tackle the dual challenge of meeting the world's need for more energy, while at the same time reducing carbon emissions. BP Ventures focuses on connecting and growing new energy business, focused on our core upstream, downstream and alternative energy businesses. In addition, it makes strategic equity investments in advanced mobility, low carbon and digital.



Champion Motors, a fully owned company by Allied Group, has been successfully representing the Volkswagen Group in Israel since 1965, as the direct importer and distributor of Volkswagen, AUDI, SKODA, SEAT and Volkswagen commercial vehicles. Champion Motors holds a key position in the Israeli market, as the second largest car importer and distributor with an active role in the Automotive and Smart Mobility ecosystem.

We provide start-ups:

Funding – 8 Automotive & Smart Mobility portfolio companies and we are open for more | Business opportunities – By promoting potential collaboration through our Joint Ventures: SKODA Auto DigiLab Israel, Powered By Champion Motors | XPLORA – A partnership with SEAT S.A on technological innovation in Israel | New Mobility Israel – A partnership with VW Group & Mobileye to provide Autonomous EV Mobility As A Service to Israel.



Mercedes-Benz

Mercedes Benz R&D Tel Aviv Ltd is a Daimler AG company. Daimler is one of the biggest producers of premium cars and the world's biggest manufacturer of commercial vehicles with a global reach. Daimler provides financing, leasing, fleet management, insurance and innovative mobility services. As part of the Daimler AG's global network of Research and Development facilities, Mercedes-Benz Research and Development Tel Aviv was opened in 2018. The Tel Aviv hub, which is led by CEO Ms. Adi Ofek, plays a crucial role in researching innovative mobility solutions and state of the art software development for Daimler. The R&D center focuses on future transportation, including instruments for digital cars, mobility services, and connected cars.

Deloitte.

Deloitte advises companies globally to explore and thrive in the Future of Mobility (FoM) and transformative automotive landscapes. Across our FoM, Smart Cities, Automotive, TMT, and Government & Public Services practices, we enable clients to understand and assess how the massive disruption underway in how people and goods move impacts their organizations. From automotive OEMs, suppliers and dealers, to startups and other technology companies, to the public sector, Deloitte advises business leaders to navigate today's disruption and identify new pathways to value creation and value capture.

In Israel, Deloitte Catalyst (formerly ITT) supports disruptive startups throughout their business lifecycle and works at the center of the ecosystem to connect the most promising startups with corporations, venture capitalists, policy makers and others.

For more, visit deloitte.com/futureofmobility.



DWF is a global legal business with +3,100 people working in 27 key locations. We are recognised as one of the leading non-Israeli law firms in Israel, working closely with local firms in providing seamless services for our clients. We are member of IATI, RISE and the Israeli-German Chamber of Commerce, are DRIVE TLV's exclusive legal advisor for Europe and are ranked in Legally Israel 100 as No.2 for Hi-Tec.

Our global transport team comprises more than 100 lawyers specialising in automotive, maritime, rail, aviation, road transport and logistics. Transport forms the root of a globalised world economy, and we advise businesses and governments in the sector on domestic and multijurisdictional transactions and disputes. As market leaders in transport law, we are recognised as innovators in legal services and advise on key developments such as driverless cars and crewless ships and related technologies such as blockchain, data analytics, AI, electrification and battery storage.



Helsinki Business Hub is the international trade and investment promotion agency for the Finnish capital region. We help foreign companies to set-up their business, grow and develop in Greater Helsinki.

The Finnish capital region is a global pioneer in offering services and creating new business through smart mobility solutions. Helsinki hosts the first open mobility-as-a-service ecosystem in the world, and everyone has open access to data in Finland.

Finland is also leading the autonomous vehicle revolution. The legislation is favorable for new experiments and business opportunities, and autonomous vehicles are already allowed on all public roads in Finland. The government and cities of the capital region are committed to further enable future intelligent mobility, and openly invite companies to participate in pilot schemes and to offer their solutions.

intuition robotics

Intuition Robotics is developing digital companion technology that brings hardware to life through proactive, context-aware, multi-modal and persona-based experiences. The company's cognitive AI platform, Q, understands the environment, makes cognitive decisions using proprietary algorithms and executes multi-modal expressions that proactively and intuitively engage users. Platform Q was selected by TRI, a Toyota company, as its first digital companion solution for their vehicles.

The company was founded in 2016 and is based in Israel with offices in San Francisco. Intuition Robotics' investors include: Toyota AI Ventures, Samsung NEXT, iRobot and Venture Capital firms from California, Israel, Japan and China.



KONNECT is an open Innovation Hub focused on the technologies of tomorrow.

Founded by the Volkswagen Group and based in Tel Aviv, KONNECT builds a bridge between the VW Group Brands and the dynamic Israeli Startup scene.

The Volkswagen Group's vision is to become a globally leading provider of sustainable mobility. As a local innovation arm, KONNECT's role is to identify, evaluate and scout for Startups and high-tech companies that help drive this vision.

Since its launch in 2018, Konnect supported and initiated numerous scouting and POC projects, market researches, b2b delegation visits and learning journeys, bringing to Israel the highly valuable network of the Volkswagen Group Brands.

Konnect is thrilled to be a silver partner for the 2nd consecutive year at Ecomotion & wishes all startups and participants a great Ecomotion week! To get in touch with our team please email: inbox@konnect-vwgroup.com



Lear is a global automotive technology leader in seating and electrical and electronic systems. Lear is located in 39 countries, serves every major automaker in the world, and Lear content can be found on more than 400 vehicle nameplates.

Lear Innovation Ventures (LIV) focuses on product, process, and business model innovation and is centered on intensifying activities around the autonomous, connected, electrified and shared mobility trends. LIV creates an environment for asking big questions and finding the best solutions. The LIV ecosystem is varied and vibrant, ranging from leveraging Lear's entire 169,000-member global team, to collaborations with world class businesses, to connecting with outside partners from the start-up, accelerator and incubator, design, and venture communities.

Lear is where passion drives possibilities. Further information is available at lear.com.

NEXVISION MOBILITY

Nexvision Mobility is a service provider to firms in the Automotive Tech and Smart Mobility space. Our clients are OEMs, Tier-1s, investors, and innovative startups. As advisors, we facilitate investments and commercial partnerships. On the service side, we offer fully managed software R&D (AI/ML) and Marketing services. Headquartered in Japan, with offices in Silicon Valley and Greater China, Nexvision can open doors in major global centers.



OSR Enterprises AG is a Swiss-based, next-generation automotive Tier1 supplier with R&D centers in Switzerland and Israel. Market leader in the field of centralized computing, OSR has developed the EVOLVER, a scalable, heterogenous, holistic and uniquely adaptable multi-domain AI brain.

Designed in accordance with OEM requirements and specifications, the EVOLVER consolidates the electrical and electronic (E/E) architecture of the car. Its advanced architecture, cybersecurity core, high processing power and AI capabilities enable OEMs to design new human-centric functionalities and improve their Advanced Driver Assistance Systems (ADAS) and Automated Driving (AD) capabilities. It's the foundation of the next generation of personalized, intelligent and securely connected vehicles.

OSR's R&D team is comprised of some of the world's leading researchers, developers and artificial intelligence, and cybersecurity experts.



The heart of our business is rail – and much more. Thanks to our 6 core businesses, we offer a full range of mobility solutions that now generate EUR 33.3 billion in revenue. SNCF makes daily life easier by bringing people and goods together and, with our +270,000 employees, we're working to meet the new expectations of today's clients – in France and Worldwide – who wants mobility solutions that are convenient, accessible, personalized and socially responsible.

Our challenge is to carry constantly growing passenger and freight traffic on a renovated network, particularly in dense areas, and to become an integrator of multimodal mobility by offering increasingly customized door-to-door solutions. With our many business lines and complementary areas of expertise, SNCF covers the entire worldwide production chain for mobility services. Our goal is to set the global standard for mobility of goods and people.



Having been one of the first law firms in Israel to recognize the trends in auto-tech and smart transportation, Tadmor Levy & Co. has become a go-to firm for key players in these industries, internationally and locally, as well as a prime resource regarding legal and commercial aspects of Israel's mobility ecosystem.

As a leader in this field, Tadmor Levy & Co. is proud to be EcoMotion's Israeli legal partner for the Main Event (fifth year running), as well as throughout the year.

Our objective at Tadmor Levy & Co. is to assist clients by offering comprehensive tailor-made legal solutions, attending to their overall needs, on par with the highest global standards.

Our clients include players in a wide range of sectors, such as energy, chemicals, food, insurance, hi-tech, media, transportation, engineering and construction, healthcare, pharmaceuticals, retail, and financial services.

Contact us: 03-6846000 | Yaniv@Tadmor-Levy.com



TE Connectivity Ltd. is a \$14 billion global technology and manufacturing leader creating a safer, sustainable, productive, and connected future. For more than 75 years, our connectivity and sensor solutions, proven in the harshest environments, have enabled advancements in transportation, industrial applications, medical technology, energy, data communications, and the home. With 80,000 employees, including more than 8,000 engineers, working alongside customers in approximately 140 countries, TE ensures that EVERY CONNECTION COUNTS.

Learn more at www.te.com and on LinkedIn, Facebook, WeChat and Twitter.



Established in 2006, Valens is a fabless semiconductor company headquartered in Israel.

The company is the world leader in HDBaseT technology, addressing the needs of the different sectors that depend on advanced digital media distribution, such as audiovisual, industrial, medical, and automotive.

Valens automotive chipsets bring a simple, holistic, and cost-effective approach to in-vehicle connectivity, with unprecedented multi-Gigabit throughput over simple wiring (single UTP for up to 15m), extraordinary capabilities to handle EMC requirements without compromising performance, convergence of several native interfaces over the same link, and scalable architecture, for multiple applications.

Valens automotive technology lowers total system costs, while supporting more bandwidth and applications. Valens is paving the way for the autonomous car.



Vayyar, the global leader in 4D imaging technology, provides the first automotive 4D point cloud application on a single radar chip creating an unrivalled real time visualization of everything happening in and around the vehicle.

Vayyar's low-cost, high-performance single chip with Point Cloud, displays the dimension, shape, location and movement of people and objects, enabling the complete classification of the car's environment, regardless of bad lighting or harsh weather conditions.

Vayyar's Radar on a Chip offers up to 48 transceivers at 76GHz-81GHz allowing for over 2000 virtual channels. The chip also consists of an internal DSP for real-time signal processing. Our unmatched single chip solution is easily integrated into an existing automotive framework, reducing both the overall cost and the number of sensors needed in and around the vehicle.



Boston Consulting Group (BCG) is a global management consulting firm and the world's leading advisor on business strategy. We partner with clients from the private and public sectors to identify their highest-value opportunities, address their most critical challenges, and transform their enterprises. On New Mobility, BCG has notably co-founded the European Startup Prize for mobility to help scaling up the European ecosystem. Founded in 1963, BCG has offices in more than 90 cities in 50 countries.

BEYOND1435

Beyond1435, initiated by Deutsche Bahn AG and co-founded by Siemens AG, Bombardier Transportation and the Swiss Federal Railways, is an open innovation platform and industry partnership for corporate groups in the transportation and mobility industry which aim to achieve innovation through co-creation. The platform combines the scale of globally leading corporations with the innovative potential of startups. Through this joint approach, startups can scale their businesses by getting access to the right combination of corporate assets.



BWR specializes in all unmanned technologies, offering tailored solutions based on proven testing and operational methodologies. Established by a group of former IAF pilots and engineers with a proven track record of designing, managing and executing hundreds of tests in the unmanned industry. At our core is the know-how and expertise in all aspects of autonomous technologies from research and testing through licensing and regulation to full operational capabilities. Together with the Israeli MOT we operate the Israeli AV Testing and Research Center (ITRC) and perform smart mobility pilots for various technologies. BWR was the first to license a fully autonomous Level4 vehicle in Israel. We operate in Israel, US, Brazil and Singapore.



The Ruhr Metropolis with more than 5 Mio residents is the biggest region in Germany and can only be exceeded in Europe by Paris and London. Due to its central location more than 60 Mio people are connected within a 3 hours drive. The excellent infrastructure affects that more than 160.000 companies are settled here. As the industrial heart of Germany you will encounter here 15 out of the 100 companies with the highest turnover in Germany.



www.addionics.com



www.alstom.com



www.anagog.com



www.argus-sec.com



www.axilion.com



www.bcg.com

BEYOND1435

www.beyond1435.com



www.bouygues.com



www.brightwayvision.com



[business.metropoleruhr.de/
invest](http://business.metropoleruhr.de/invest)



www.bwr.co.il



www.caaresys.com



www.cnwglobal.com



www.cognata.com



www.co-pace.com



www.neteera.com



www.nextgear.fund



www.nvidia.com



www.drakestar.com



www.drivetlv.com



www.ford.com



www.optimalplus.com



www.otonomo.io



www.planetm.com



www.foresightauto.com



www.foretellix.com



www.goto.global



www.regulus.com



www.saferide.io



www.siemens.com



GUARDIAN

www.guardian-optech.com



www.guardknox.com



www.hailo.ai



www.skytran.com



www.squirepattonboggs.com



www.uveye.com



www.imat-uve.de



www.intesasanpaolo.com



www.invest-in-bavaria.com



www.valeo.com



www.ridewithvia.com



www.keysight.com



GRAND DUCHY OF LUXEMBOURG
Trade and Investment Office Tel Aviv

www.tradeandinvest.lu



www.maxionwheels.com

Platinum Partners

Yandex

MAGNA

GENERAL MOTORS

Gold Partners

Rosenberger

RENAULT NISSAN MITSUBISHI

AYALON HIGHWAYS

SOMPO Digital Lab Tel Aviv

HARMAN
A HUBBARD COMPANY

SOFTWHEEL

aws

HondaXcelerator

Silver Partners

LEAR CORPORATION

KONNECT VOLKSWAGEN GROUP INNOVATION TEL AVIV

bp ventures

Valens

TADMOR LEVY

arbe

APTIV

NEXVISION MOBILITY

OSR
Enterprise AG

AURORALABS

BOSCH

Deloitte

HELSINKI BUSINESS HUB

ETE

SNCF

vayyar

dwf

intuition robotics

Volkswagen SEAT SKODA Audi

CHAMPION MOTORS

Mercedes-Benz

Bronze Partners

RUHR
CITY OF DUESSELDORF

BEYOND1435

BWR

BCG

CNW
CONSUMER AND FINANCE

GRAND DUCHY OF LUXEMBOURG
Trade and Investment Office 54, Ave.

skyTran

planetm

Ford

REGULUS

REGULUS

NEXTGEAR VENTURES

VIO

INTESA SANPAOLO INNOVATION CENTER

cognata

otonomo

foretellix
verifying autonomous systems

SAFERIDE
TECHNOLOGIES

imint
INNOVATION

Valeo

neteera

OPTIMAL+
Lifecycle analytics you can trust

Axilion

ANAGOG
Turning Mobility Into Utility

imat 易马
design & engineering

ADDIONICS

Guard KNOX

BWV
Bright Way Vision

GUARDIAN

BOUYGIES

CAARES

SIEMENS

SQUIRE
PATTON BOGGS

HAILO
Empowering Intelligence

ARGUS
CYBER SECURITY

MAXION
WHEELS

ALSTOM

DRIVE
TOTAL MOBILITY NEW

GOZO
GLOBAL

FORESIGHT

co-pace
Powered by Continental

KEYSIGHT
TECHNOLOGIES

DRAKE STAR
PARTNERS

LOVEYE

NVIDIA

**7TH ECOMOTION MAIN EVENT IN
ECOMOTION WEEK 2019**